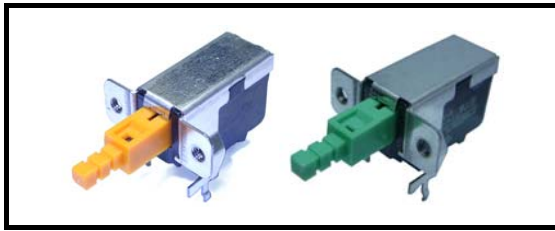


# POWER SWITCH

## SDDL/SFDL SERIES



### ◆ Feature

- Compact power switch conforming to safety standards for electronic equipment.
- Two types of travel: 1.5mm and 2.5mm.
- SPST circuit configuration only.

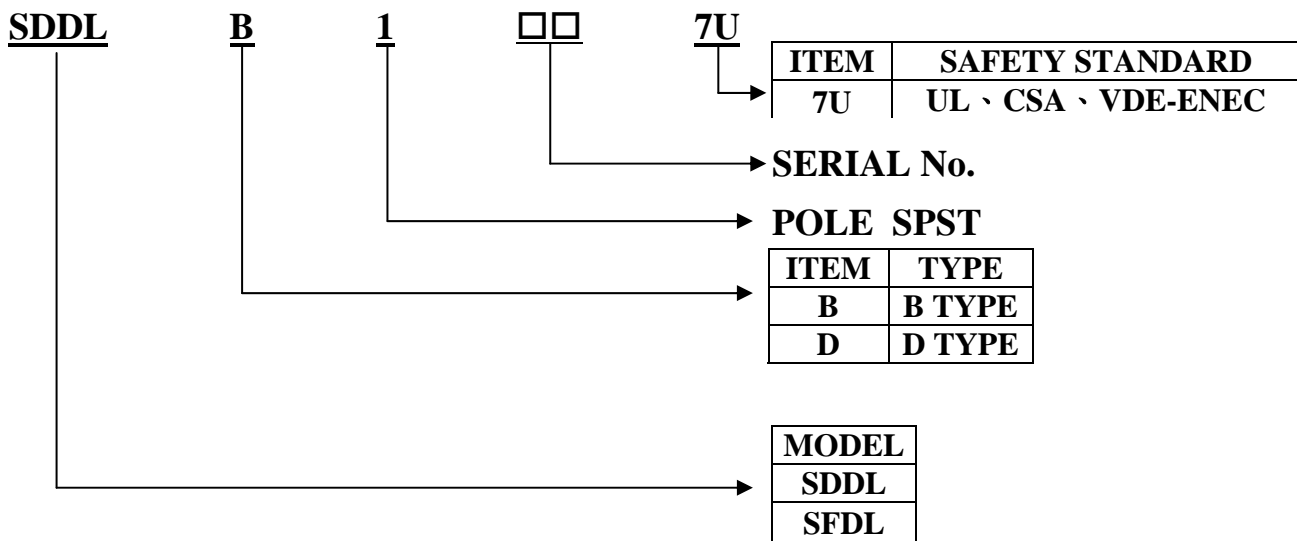
### ◆ Applications

- Audio equipment

### ◆ Rating and Safety Standard Approval No.

Model	Approved Type No.	UL CSA	VDE
SDDL B	SDLB1P	TV-3	4A/32A 250V-μ
SDDL D	SDLD1P	TV-3	4A/32A 250V-μ
SFDL B	SDLB1P-A	TV-5	5A/80A 250V-μ
SFDL D	SDLD1P-A	TV-5	5A/80A 250V-μ

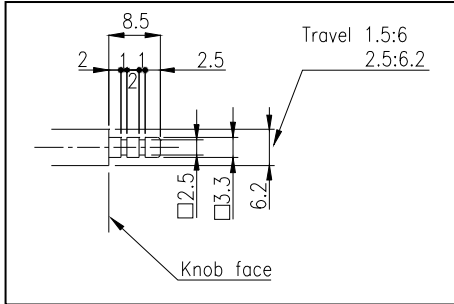
### ◆ POWER SWITCH PRODUCTS NUMBERING SYSTEM



### ◆ Common specifications

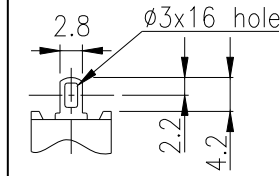
Model	Travel( T )	Total travel ( T.T.)	Operating force	Color of slide part	Construction
SDDL B	2.5mm	3.5mm	350±150gf	Yellow	Micro gap
SDDL D	1.5mm	2.5mm	400±150gf	Green	Micro gap
SFDL B	2.5mm	3.5mm	600 <sup>+300</sup> / <sub>-200</sub> gf	Yellow	Micro gap
SFDL D	1.5mm	2.5mm	600 <sup>+300</sup> / <sub>-200</sub> gf	Green	Micro gap

### 1.Detail of shaft (Unit:mm)

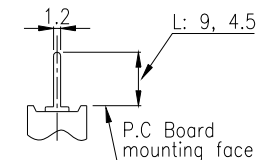


### 2.Terminal style

Type A (For lead wiring)  
□ 3×1 hole



Type B (For lapping printed wiring)  
Ø1.55 hole



### Dimension

Unit : mm.

Type	Style	Circuit diagram Viewed from the direction A P.C. board mounting hole dimensions ( Viewed from the direction A )
Frame type A		
Frame type B		
Frame type C		

Both SDDL / SDDL series have the same outline dimensions