

SLIDE SWITCH

SFSD SERIES



◆ Feature

- Thin type-only 2.25mm in height
- Reflow & single side recoil type

◆ Applications

- Function selector switch for multimedia device ex. headphone, car radio, DC, PDP set

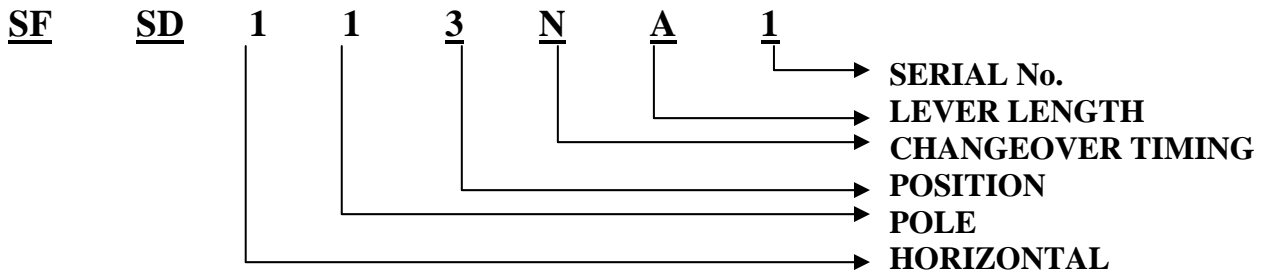
◆ Common specifications

Items	Stand specification
Ratings	0.3A 4V DC
Operating life Without load	10,000 cycles
Initial contact resistance	70 mΩ max.
Reel package	3000pcs

◆ Products line

Poles	Position	Lever length	Terminal style	Changeover timing	Soldering	Travel (mm)	Products No.	Drawing No.
1	3	2mm	SMD	Non shorting	Re-flow	2	SFSD113NA1	1

◆ SLIDE SWITCH PRODUCTS NUMBERING SYSTEM



◆ Dimension

Unit : mm

No	Pole-position	Dimensions	Circuit diagram	
			(Viewed from the direction A)	P.C. board mounting hole dimensions (Viewed from the direction A)
1	1-3			