

# PUSH SWITCH

## SPPJ2 SERIES



### ◆ Feature

- 2.5mm travel
- 5.5mm in lever height from P.C.B
- Printed wiring available

### ◆ Applications

- Audio system
- AP Internet hardware

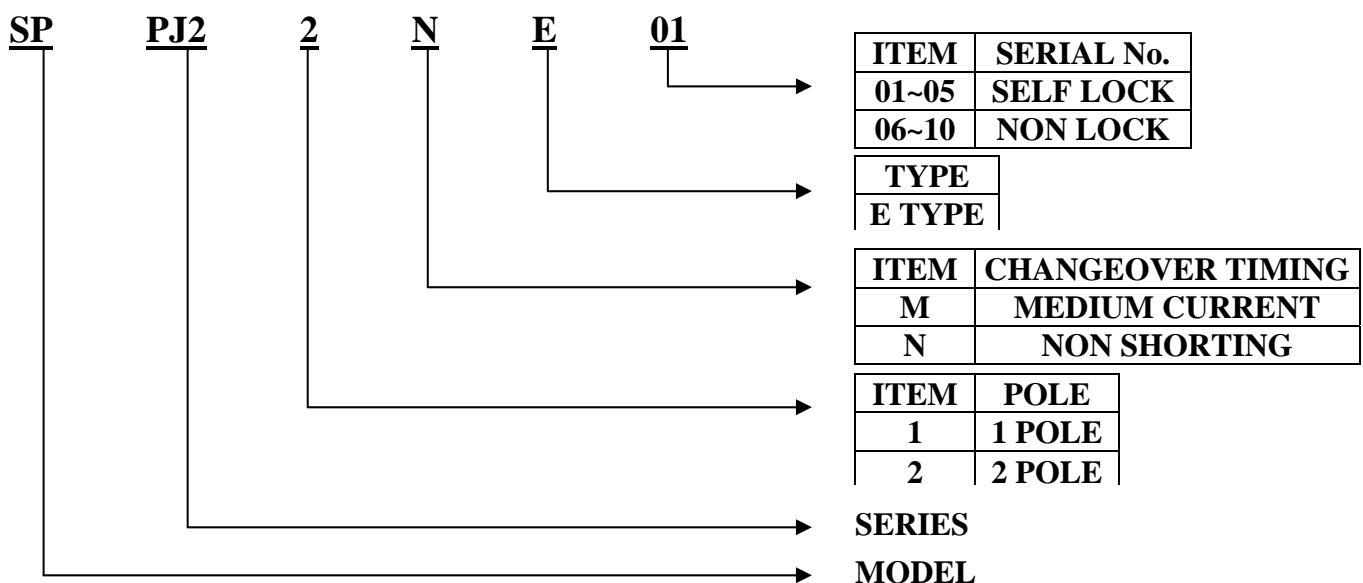
### ◆ Common specifications

Items	Stand specification	
Ratings	0.2A 30V DC	1A 25V DC (resistive load)
Operating life without load	10,000 cycles	5,000cycles
Initial contact resistance	100mΩ max.	

### ◆ Products line

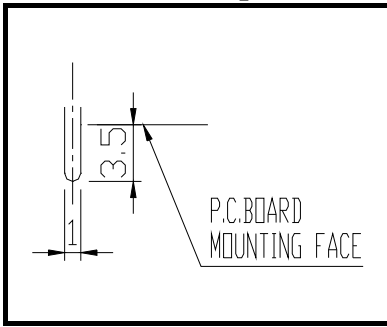
Rating	Poles	Position	Changeover timing	Terminal	Operating force	Operating	Travel (mm)	Total travel (mm)	Products No.	Drawing No.
0.2A	2	2	Non-shorting	Printed	300±150gf	SELF LOCK	2.5	3.5	SPPJ22NE01	1
						NON LOCK	-	3.5	SPPJ22NE06	2
400±100gf					SELF LOCK	2.5	3.5	SPPJ22ME01	1	
					NON LOCK	-	3.5	SPPJ22ME06	2	

### ◆ PUSH SWITCH PRODUCTS NUMBERING SYSTEM

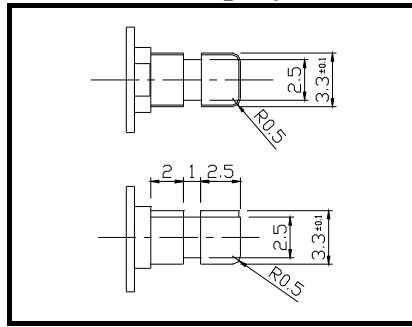


### ◆ Common specification

Terminal for printed



Lever tip style



### ◆ Dimension

Unit : mm

No	Dimensions	Circuit diagram
		Viewed from the direction A P.C. board mounting hole dimensions (viewed from the direction A)
1		
2		