

## Eight-Way Power Divider, 2 - 500 MHz

Rev. V3

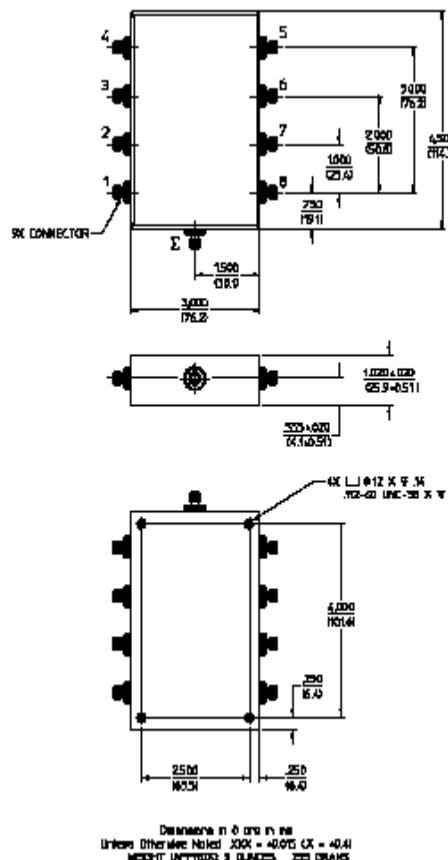
### Features

- Low Loss: 1 dB Typical
- High Isolation: 30 dB Typical
- Low VSWR: 1.3:1 Typical
- Impedance: 50 Ohms Nominal
- Maximum Power Rating or Input Power: 2 Watt Max.
- Internal Load Dissipation: 0.25 Watts Max.
- MIL-STD-202 Screening Available

### C-18

### Description

A Power Divider is ideally a lossless reciprocal device which can also perform vector summation of two or more signals and thus is sometimes called a power combiner or summer.



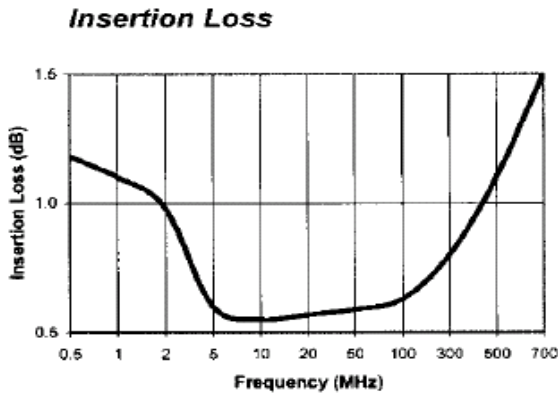
### Electrical Specifications<sup>1</sup>: T<sub>A</sub> = -55°C to +85°C

Parameter	Test Conditions	Frequency	Units	Min	Typ	Max
Insertion Loss	Less Coupling	2 - 500 MHz	dB	—	—	1.2
Isolation	—	2 - 100 MHz	dB	30	—	—
		100 - 500 MHz	dB	25	—	—
Amplitude Balance	—	2 - 100 MHz	dB	—	—	0.15
		100 - 500 MHz	dB	—	—	0.25
Phase Balance	—	2 - 100 MHz	°	—	—	2.0
		100 - 500 MHz	°	—	—	3.5
VSWR	All Ports	2 - 100 MHz	Ratio	—	—	1.6:1
		100 - 500 MHz	Ratio	—	—	1.35:1

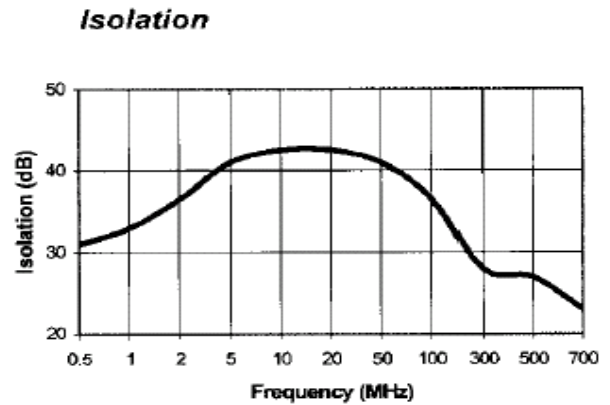
1. All specifications apply with 50 ohm source and load impedance.  
This product contains elements protected by United States Patent Number 3,428,920.

## Typical Performance Curves

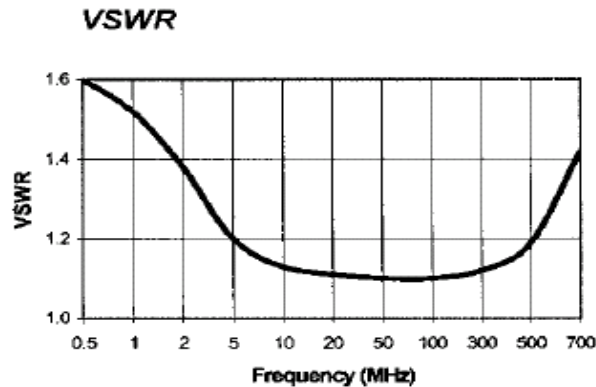
*Insertion Loss*



*Isolation*



*VSWR*



## Ordering Information

Part Number	Package
DS-309 BNC	C-18
DS-309 SMA	C-18
DS-309 TNC	C-18
DS-309 N	C-18