

H-81-4

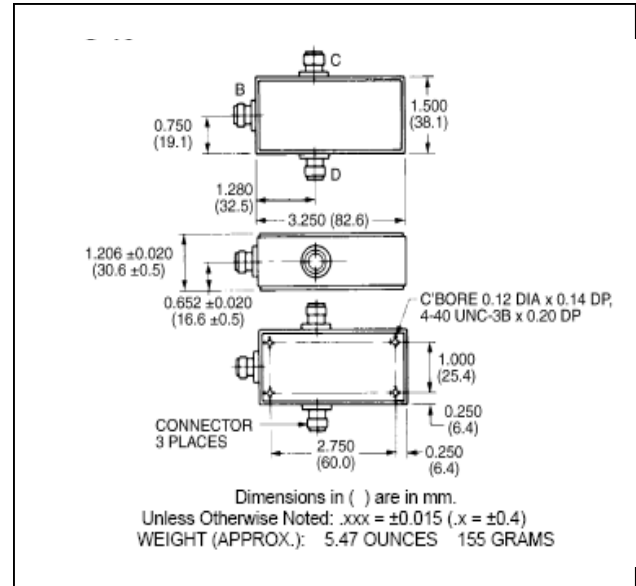
180° Two-Way Power Divider, 5 - 1000 MHz

Rev. V2

Features

- Broadband Frequency Range
- Low Loss - Less Than 1.3 dB Max
- VSWR - 1.4:1 Max

C-19



Guaranteed Specifications: From -55°C to +85°C

Frequency Range		5-1000 MHz
Insertion Loss (less coupling)	5-100 MHz	0.7 dB Max
	100 -1000 MHz	1.4 dB Max
Isolation	5-100 MHz	20 dB Min
	100 -1000 MHz	25 dB Min
Amplitude Balance	5-100 MHz	0.2 dB Max
	100 -1000 MHz	0.5 dB Max
VSWR (All Ports)		1.4:1 Max
Phase Balance	5-100 MHz	5° Max
	100 -1000 MHz	2.5° Max

Operating Characteristics

Parameter	Absolute Maximum
Impedance	50 Ohms Nominal
Maximum Power Rating Or Input Power	2.0 Watt Max
Internal Load Dissipation	0.5 Watt Max
Environmental	

* All specifications apply with 50 ohm source and load impedance.

ADVANCED: Data Sheets contain information regarding a product M/A-COM Technology Solutions is considering for development. Performance is based on target specifications, simulated results, and/or prototype measurements. Commitment to develop is not guaranteed.
PRELIMINARY: Data Sheets contain information regarding a product M/A-COM Technology Solutions has under development. Performance is based on engineering tests. Specifications are typical. Mechanical outline has been fixed. Engineering samples and/or test data may be available. Commitment to produce in volume is not guaranteed.

• **North America** Tel: 800.366.2266 • **Europe** Tel: +353.21.244.6400
• **India** Tel: +91.80.4155721 • **China** Tel: +86.21.2407.1588
Visit www.macomtech.com for additional data sheets and product information.

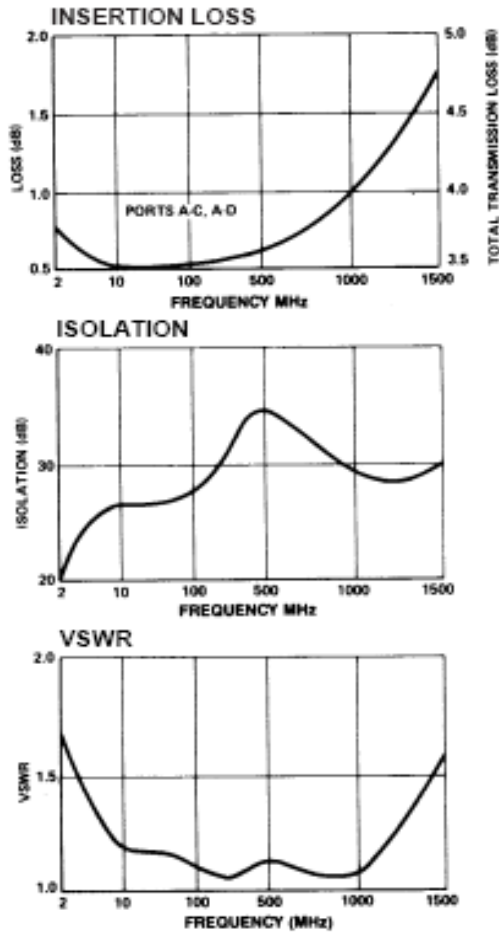
M/A-COM Technology Solutions Inc and its affiliates reserve the right to make changes to the products and information contained herein without notice.

H-81-4

180° Two-Way Power Divider,
5 - 1000 MHz

Rev. V2

Typical Performance Curves



Ordering Information

Part Number	Package
H-81-4 N	Connectorized
H-81-4 SMA	Connectorized
H-81-4 TNC	Connectorized
H-81-4 BNC	Connectorized

Functional Diagram

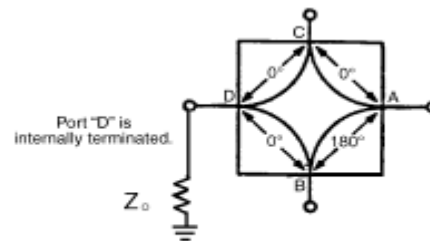


Figure 1. 2-way, In-Phase (180°) Power Divider/Summer, or ISO-T