

RF Power MOSFET Transistor 2W, 500-1000MHz, 28V

M/A-COM Products
Released; RoHS Compliant

Features

- N-Channel enhancement mode device
- DMOS structure
- Lower capacitances for broadband operation
- Common source configuration
- Lower noise floor
- Applications
 - Broadband linear operation
500 MHz to 1400 MHz

ABSOLUTE MAXIMUM RATINGS AT 25° C

Parameter	Symbol	Rating	Units
Drain-Source Voltage	V_{DS}	65	V
Gate-Source Voltage	V_{GS}	20	V
Drain-Source Current	I_{DS}	0.7	A
Power Dissipation	P_D	8	W
Junction Temperature	T_J	200	°C
Storage Temperature	T_{STG}	-55 to +150	°C
Thermal Resistance	θ_{JC}	21.8	°C/W

TYPICAL DEVICE IMPEDANCE

F (MHz)	Z_{IN} (Ω)	Z_{LOAD} (Ω)
500	10.0 - j41.5	40.0 + j53.0
1000	4.2 - j12.0	11.85 + j33.0
1400	3.5 - j1.0	7.5 + j23.3
$V_{DD} = 28V, I_{DQ} = 25mA, P_{OUT} = 2.0 W$		

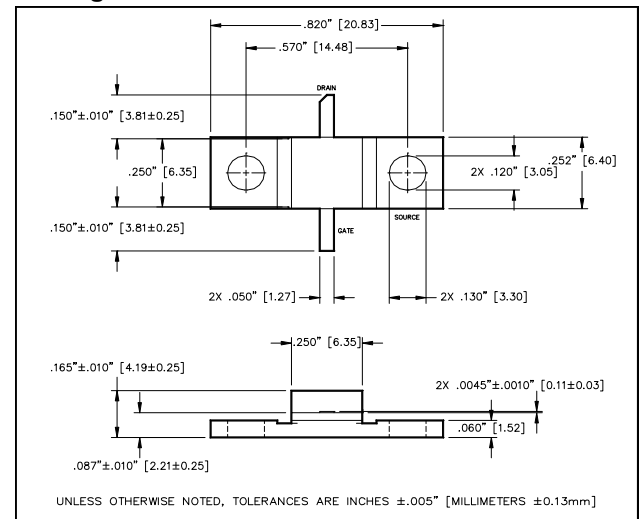
Z_{IN} is the series equivalent input impedance of the device from gate to source.

Z_{LOAD} is the optimum series equivalent load impedance as measured from drain to ground.

ELECTRICAL CHARACTERISTICS AT 25°C

Parameter	Symbol	Min	Max	Units	Test Conditions
Drain-Source Breakdown Voltage	BV_{DSS}	65	-	V	$V_{GS} = 0.0 V, I_{DS} = 1.0 mA$
Drain-Source Leakage Current	I_{DSS}	-	0.5	mA	$V_{GS} = 28.0 V, V_{DS} = 0.0 V$
Gate-Source Leakage Current	I_{GSS}	-	0.5	μA	$V_{GS} = 20.0 V, V_{DS} = 0.0 V$
Gate Threshold Voltage	$V_{GS(TH)}$	2.0	6.0	V	$V_{DS} = 10.0 V, I_{DS} = 5.0 mA$
Forward Transconductance	G_M	40	-	mS	$V_{DS} = 28.0 V, I_{DS} = 50.0 mA, \Delta V_{GS} = 1.0V, 80 \mu s$ Pulse
Input Capacitance	C_{ISS}	-	3.5	pF	$V_{DS} = 28.0 V, F = 1.0 MHz$
Output Capacitance	C_{OSS}	-	3.75	pF	$V_{DS} = 28.0 V, F = 1.0 MHz$
Reverse Capacitance	C_{RSS}	-	1.2	pF	$V_{DS} = 28.0 V, F = 1.0 MHz$
Power Gain	G_P	10	-	dB	$V_{DD} = 28.0 V, I_{DQ} = 25 mA, P_{OUT} = 2.0 W F = 1.0 GHz$
Drain Efficiency	η_D	40	-	%	$V_{DD} = 28.0 V, I_{DQ} = 25 mA, P_{OUT} = 2.0 W F = 1.0 GHz$
Load Mismatch Tolerance	VSWR-T	-	20:1	-	$V_{DD} = 28.0 V, I_{DQ} = 25 mA, P_{OUT} = 2.0 W F = 1.0 GHz$

Package Outline



UNLESS OTHERWISE NOTED, TOLERANCES ARE INCHES $\pm .005$ " [MILLIMETERS $\pm 0.13mm$]

LETTER DIM	MILLIMETERS		INCHES	
	MIN	MAX	MIN	MAX
A	20.70	20.96	.815	.825
B	14.35	14.61	.565	.575
C	13.72	14.22	.540	.560
D	6.27	6.53	.247	.257
E	6.22	6.48	.245	.255
F	6.22	6.48	.245	.255
G	1.14	1.40	.045	.055
H	2.92	3.18	.115	.125
J	1.40	1.65	.055	.065
K	1.96	2.46	.077	.097
L	3.61	4.37	.142	.172
M	.08	.15	.003	.006

ADVANCED: Data Sheets contain information regarding a product M/A-COM Technology Solutions is considering for development. Performance is based on target specifications, simulated results, and/or prototype measurements. Commitment to develop is not guaranteed.

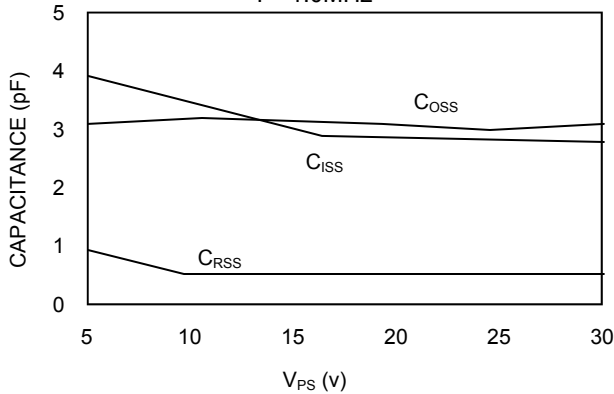
PRELIMINARY: Data Sheets contain information regarding a product M/A-COM Technology Solutions has under development. Performance is based on engineering tests. Specifications are typical. Mechanical outline has been fixed. Engineering samples and/or test data may be available. Commitment to produce in volume is not guaranteed.

• **North America** Tel: 800.366.2266 / Fax: 978.366.2266
 • **Europe** Tel: 44.1908.574.200 / Fax: 44.1908.574.300
 • **Asia/Pacific** Tel: 81.44.844.8296 / Fax: 81.44.844.8298
 Visit www.macontech.com for additional data sheets and product information.

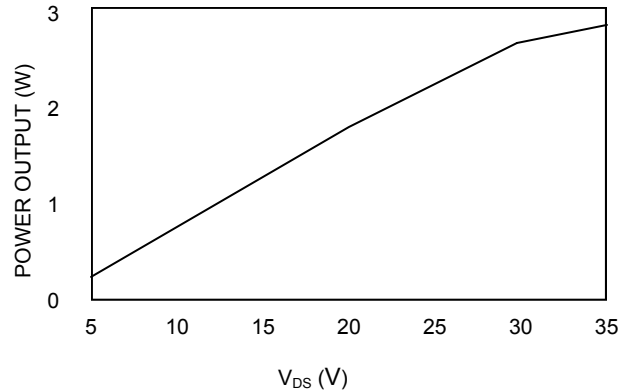
M/A-COM Technology Solutions, Inc. and its affiliates reserve the right to make changes to the product(s) or information contained herein without notice.

Typical Broadband Performance Curves

CAPACITANCES vs VOLTAGE
 $F = 1.0\text{MHz}$

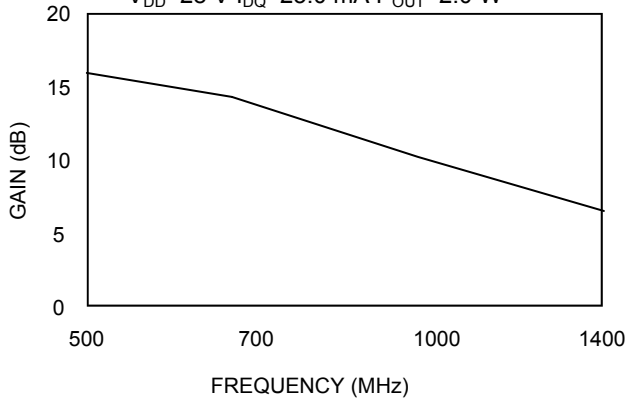


POWER OUTPUT vs VOLTAGE
 $F = 1.0\text{GHz } P_{IN} = 2.0\text{ W } I_{DQ} = 25\text{ mA}$



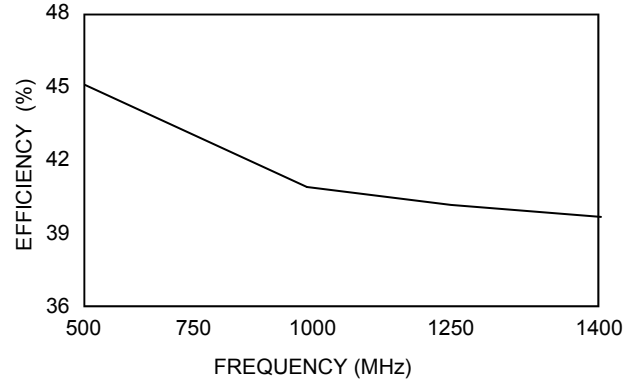
GAIN vs FREQUENCY

$V_{DD} = 28\text{ V } I_{DQ} = 25.0\text{ mA } P_{OUT} = 2.0\text{ W}$



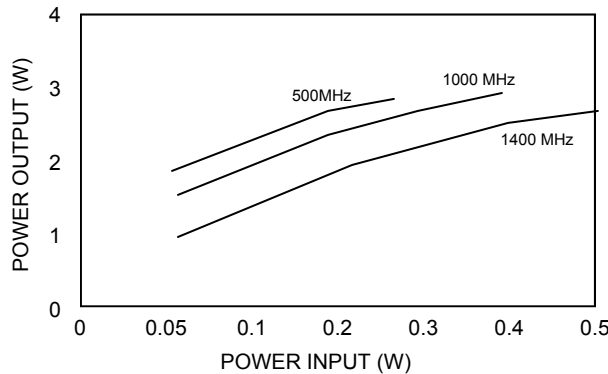
EFFICIENCY vs FREQUENCY

$V_{DD} = 28\text{ V } I_{DQ} = 25.0\text{ mA } P_{out} = 2.0\text{ W}$

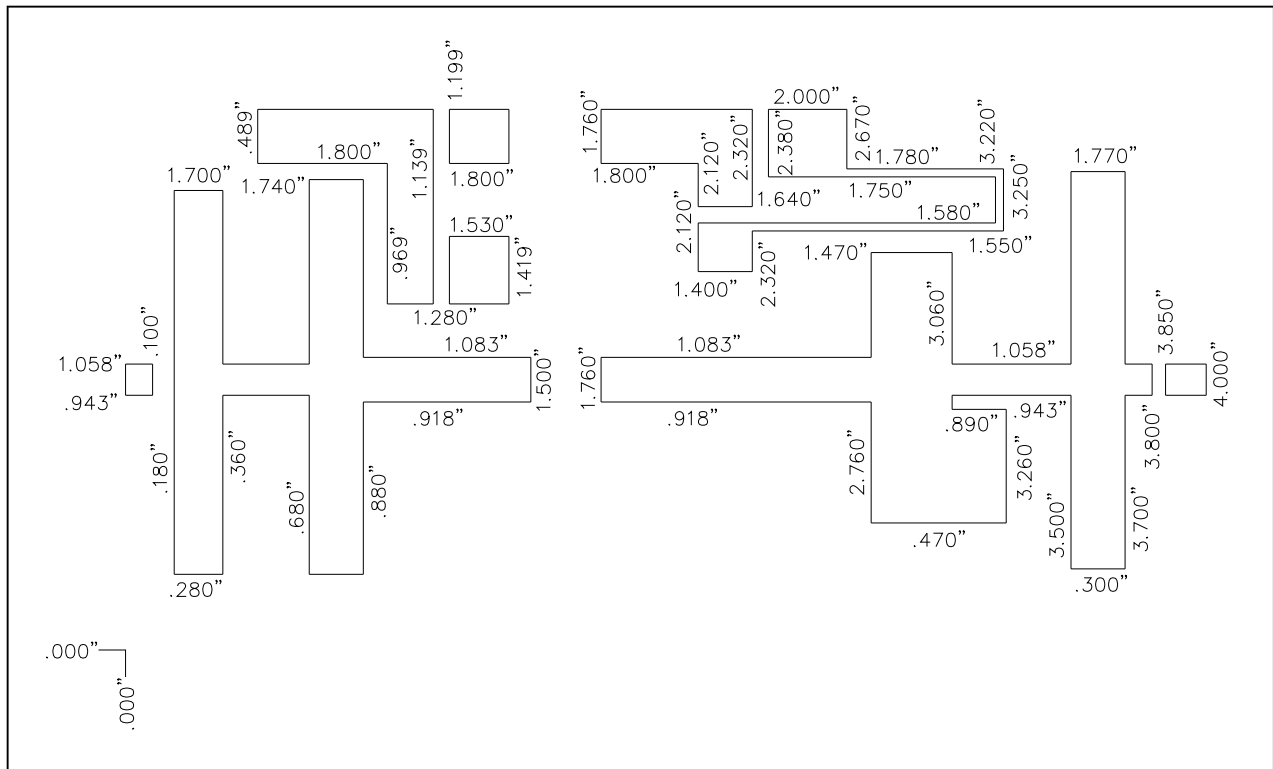


POWER OUTPUT vs POWER INPUT

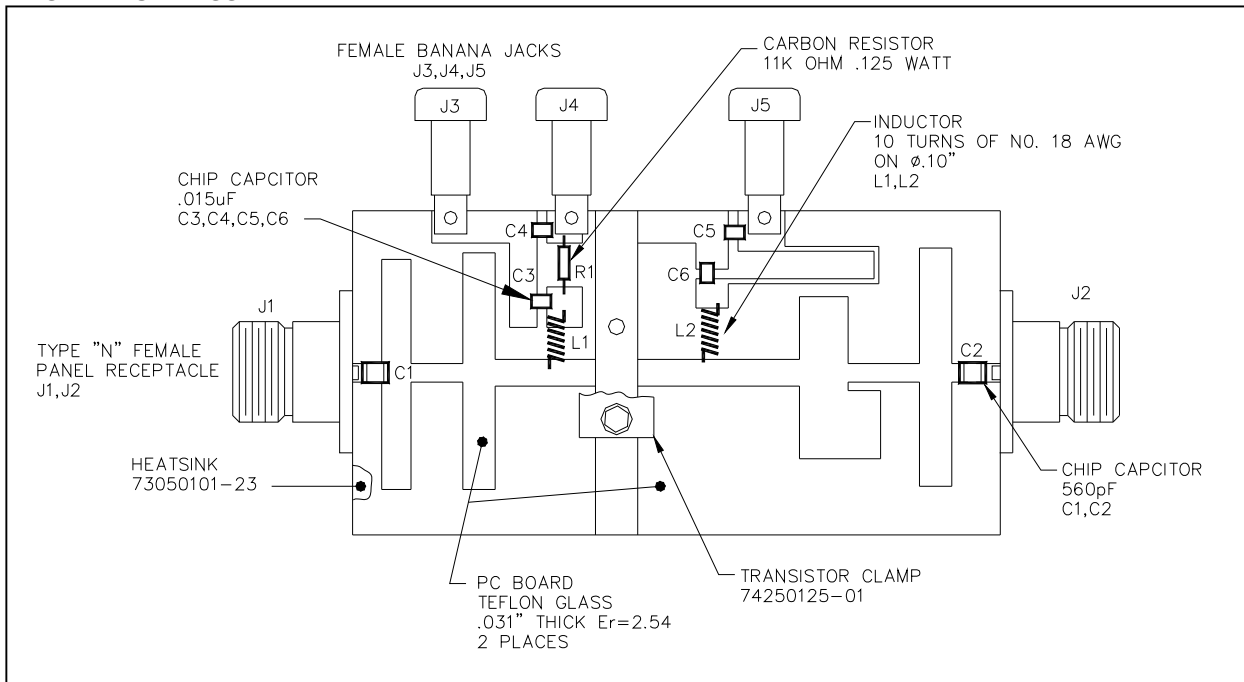
$V_{DD} = 28\text{ V } I_{DQ} = 25.0\text{ mA}$



TEST FIXTURE CIRCUIT DIMENSIONS



TEST FIXTURE ASSEMBLY



ADVANCED: Data Sheets contain information regarding a product M/A-COM Technology Solutions is considering for development. Performance is based on target specifications, simulated results, and/or prototype measurements. Commitment to develop is not guaranteed.

PRELIMINARY: Data Sheets contain information regarding a product M/A-COM Technology Solutions has under development. Performance is based on engineering tests. Specifications are typical. Mechanical outline has been fixed. Engineering samples and/or test data may be available. Commitment to produce in volume is not guaranteed.

- **North America** Tel: 800.366.2266 / Fax: 978.366.2266
- **Europe** Tel: 44.1908.574.200 / Fax: 44.1908.574.300
- **Asia/Pacific** Tel: 81.44.844.8296 / Fax: 81.44.844.8298

Visit www.macontech.com for additional data sheets and product information.

M/A-COM Technology Solutions Inc. and its affiliates reserve the right to make changes to the product(s) or information contained herein without notice.