

MACP-009404-C80370



Coupler, 8dB
5 to 1000 MHz

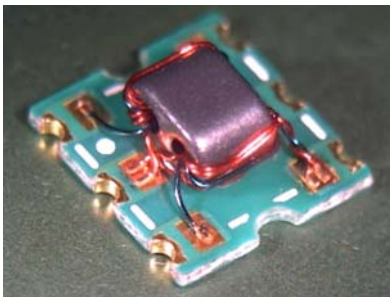
M/A-COM Products
Released, Rev. V1

Features

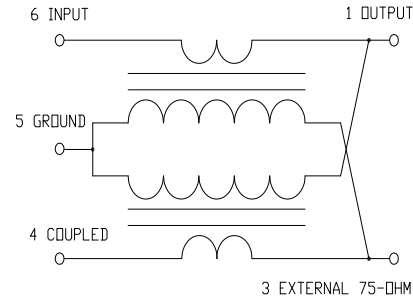
- Surface mount
- Coupling 8dB typical
- 260°C reflow compatible
- RoHS* compliant, lead free
- Available on tape and reel.

Description

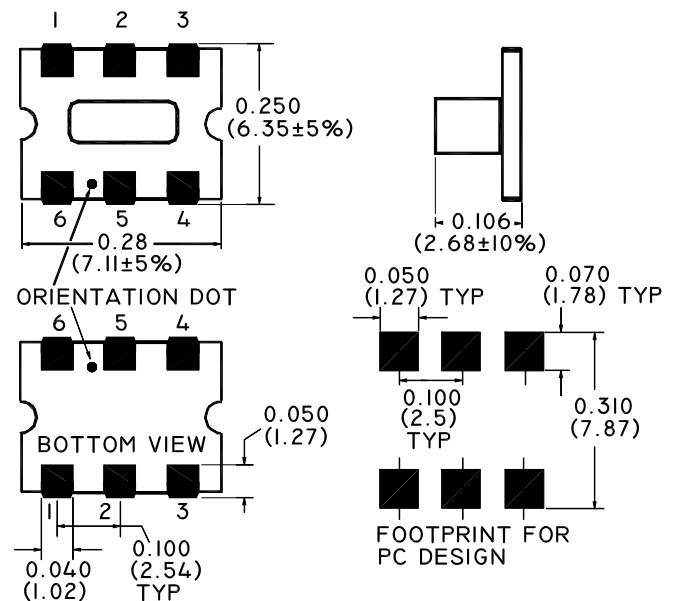
The MACP-009404-C80370 is a high performance 75Ω, 8dB coupler, in a SM-55 low cost surface mount package. It is designed for use in high volume CATV applications. Typical applications include set-top boxes, network interface units, broadband amplifiers and head-end equipment.



Schematic



Case style: SM-55



Dimensions in inches [mm] Tolerance: .xx ± .02, .xxx ± .010, unless otherwise stated

Pin configuration

Pin no.	Function
1	Output
2	Not Connected
3	External 75 Ohm
4	Coupled
5	Ground
6	Input

Ordering information

Part number	Description
MACP-009404-C80370	Reel quantity 900
MACP-009404-C803TB	Customer Test Board

Note: Reference Application Note **M513** for reel size information.

* Restrictions on Hazardous Substances, European Union Directive 2002/95/EC.

ADVANCED: Data Sheets contain information regarding a product M/A-COM Technology Solutions is considering for development. Performance is based on target specifications, simulated results, and/or prototype measurements. Commitment to develop is not guaranteed.
PRELIMINARY: Data Sheets contain information regarding a product M/A-COM Technology Solutions has under development. Performance is based on engineering tests. Specifications are typical. Mechanical outline has been fixed. Engineering samples and/or test data may be available. Commitment to produce in volume is not guaranteed.

• **North America** Tel: 800.366.2266 • **Europe** Tel: +353.21.244.6400
 • **India** Tel: +91.80.4155721 • **China** Tel: +86.21.2407.1588
 Visit www.macomtech.com for additional data sheets and product information.

M/A-COM Technology Solutions Inc. and its affiliates reserve the right to make changes to the product(s) or information contained herein without notice.

Coupler, 8dB
5 to 1000 MHz

M/A-COM Products
Released, Rev. V1

Electrical Specifications: $T_A=25^{\circ}\text{C}$, $Z_0=75\Omega$

Parameter	Test Conditions	Units	Min	Typ	Max
Coupling	5 - 870 MHz	dB	-	7.9	± 0.6
	870 - 1000 MHz	dB	-	7.9	± 0.8
Main Line Loss	5 - 870 MHz	dB	-	1.5	2.3
	870 - 1000 MHz	dB	-	2.1	2.6
Coupling Flatness	5 - 1000 MHz	dB	-	-	0.9
Directivity	5 - 870 MHz	dB	-	17	11
	870 - 1000 MHz	dB	-	13	10
Input Return Loss	5 - 50 MHz	dB	17	18	-
	50 - 870 MHz	dB	16	18	-
	870 - 1000 MHz	dB	16	20	-
Output Return Loss	5 - 50 MHz	dB	24	22	-
	50 - 870 MHz	dB	20	34	-
	870 - 1000 MHz	dB	18	24	-
Coupled Return Loss	5 - 50 MHz	dB	16	19	-
	50 - 870 MHz	dB	16	20	-
	870 - 1000 MHz	dB	16	20	-

Absolute Maximum Ratings

Parameter	Absolute maximum
RF power	250mW
DC current	30mA
Operating Temperature	-40°C to $+85^{\circ}\text{C}$
Storage Temperature	-40°C to $+85^{\circ}\text{C}$

ADVANCED: Data Sheets contain information regarding a product M/A-COM Technology Solutions is considering for development. Performance is based on target specifications, simulated results, and/or prototype measurements. Commitment to develop is not guaranteed.

PRELIMINARY: Data Sheets contain information regarding a product M/A-COM Technology Solutions has under development. Performance is based on engineering tests. Specifications are typical. Mechanical outline has been fixed. Engineering samples and/or test data may be available. Commitment to produce in volume is not guaranteed.

• **North America** Tel: 800.366.2266 • **Europe** Tel: +353.21.244.6400
 • **India** Tel: +91.80.4155721 • **China** Tel: +86.21.2407.1588
 Visit www.macomtech.com for additional data sheets and product information.

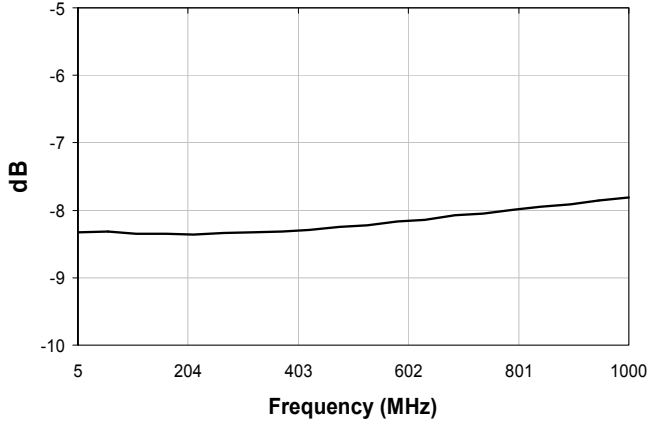
M/A-COM Technology Solutions Inc. and its affiliates reserve the right to make changes to the product(s) or information contained herein without notice.

Coupler, 8dB
5 to 1000 MHz

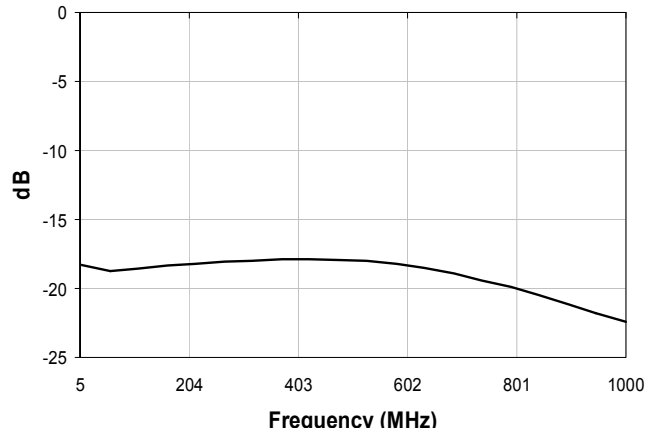
M/A-COM Products
Released, Rev. V1

Typical Performance Curves: $T_A=25^\circ\text{C}$, $Z_0=75\Omega$

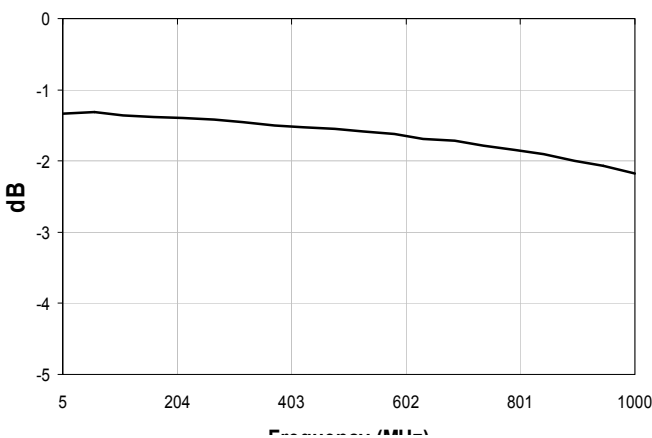
Coupling



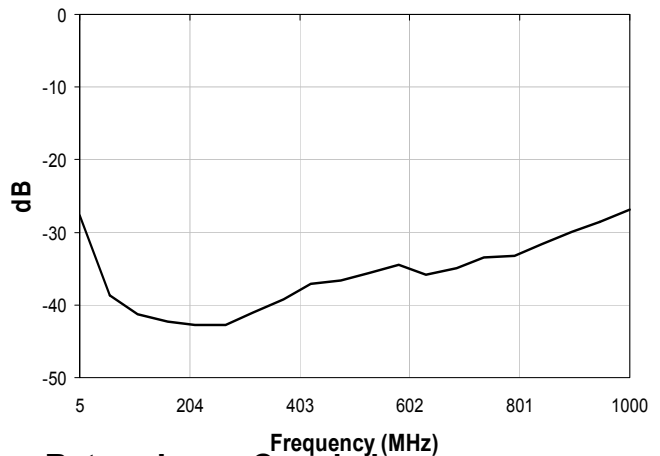
Return Loss: Input



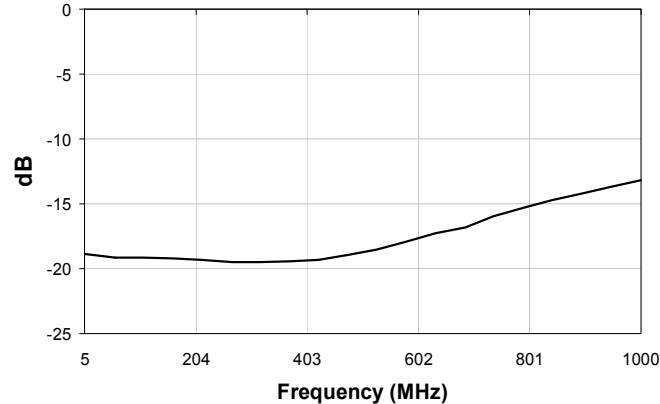
Main Line Loss



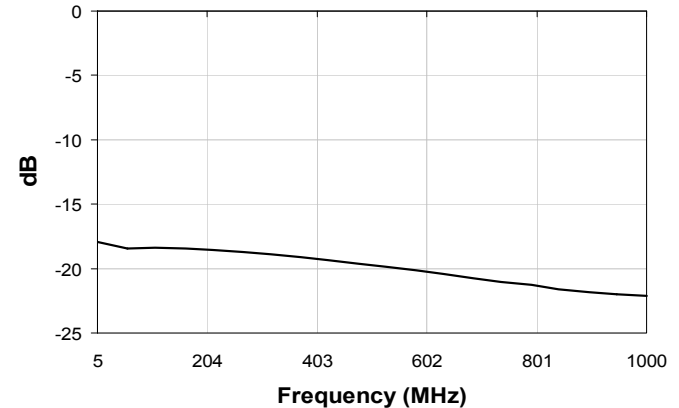
Return Loss: Output



Directivity



Return Loss: Coupled



ADVANCED: Data Sheets contain information regarding a product M/A-COM Technology Solutions is considering for development. Performance is based on target specifications, simulated results, and/or prototype measurements. Commitment to develop is not guaranteed.
PRELIMINARY: Data Sheets contain information regarding a product M/A-COM Technology Solutions has under development. Performance is based on engineering tests. Specifications are typical. Mechanical outline has been fixed. Engineering samples and/or test data may be available. Commitment to produce in volume is not guaranteed.

• North America Tel: 800.366.2266 • Europe Tel: +353.21.244.6400
 • India Tel: +91.80.4155721 • China Tel: +86.21.2407.1588
 Visit www.macomtech.com for additional data sheets and product information.

M/A-COM Technology Solutions Inc. and its affiliates reserve the right to make changes to the product(s) or information contained herein without notice.