

MAFL-009272-CD0AC0



CATV Diplex Filter
5 - 1002 / 1125 - 1675 MHz

M/A-COM Products
V5

Features

- 75 Ohm
- SMT unit
- RoHS Compliant

Description

- M/A-COM's MAFL-009272-CD0AC0 is a surface mount diplex filter unit designed for MoCA applications.

Ordering Information

Part Number	Package
MAFL-009272-CD0AC0	200 Piece Reel

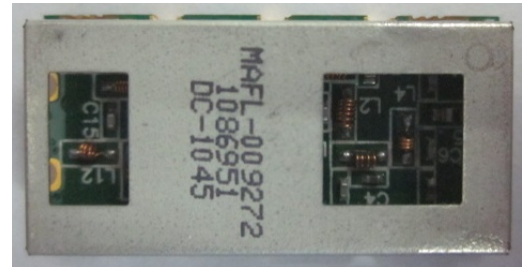
Pin Configuration

Function	Pin Number
Common Port	2
Low Pass Port	10
High Pass Port	4
Ground	1, 3, 5 - 9
Not connected	-

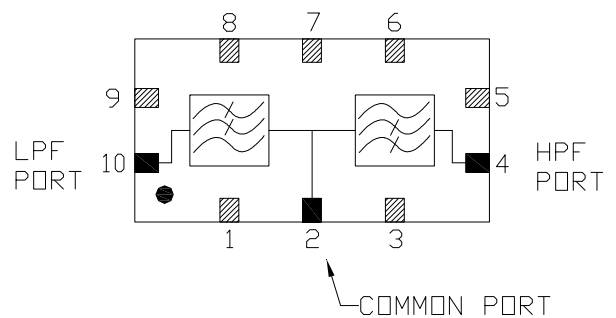
Electrical Specifications: $T_A = 25^\circ\text{C}$, $Z_0 = 75\Omega$

Parameter	Units	Min	Typ	Max
Common to Low				
Insertion Loss				
5 - 42 MHz	dB	-	0.05	0.25
42 - 860 MHz	dB	-	0.6	1.0
860 - 1002 MHz	dB	-	1.5	1.7
Rejection				
1130 - 1550 MHz	dB	37	40	-
1550 - 1675 MHz	dB	36	40	-
Common to High				
Insertion Loss				
1125 - 1675 MHz	dB	-	1.7	2.0
Rejection				
5 - 1002 MHz	dB	37	40	-
2250 - 2400 MHz	dB	30	33	-
2400 - 2600 MHz	dB	18	20	-
2600 - 3000 MHz	dB	10	12	-
Common Port Return Loss				
5 - 600 MHz	dB	12	16	-
600 - 950 MHz	dB	11	12	-
950 - 1002 MHz	dB	12	13	-
1125 - 1200 MHz	dB	12	13	-
1200 - 1550 MHz	dB	11	12	-
1550 - 1675 MHz	dB	9.5	11	-
Common port voltage transient	V	-	-	200

Product Image



Functional Schematic



Absolute Maximum Ratings

Parameter	Absolute Maximum
Storage Temperature	-40°C to +85°C
Operating Temperature	-40°C to +85°C
DC Current	30mA
RF Power	250mW

ADVANCED: Data Sheets contain information regarding a product M/A-COM Technology Solutions is considering for development. Performance is based on target specifications, simulated results, and/or prototype measurements. Commitment to develop is not guaranteed.
PRELIMINARY: Data Sheets contain information regarding a product M/A-COM Technology Solutions has under development. Performance is based on engineering tests. Specifications are typical. Mechanical outline has been fixed. Engineering samples and/or test data may be available. Commitment to produce in volume is not guaranteed.

• **North America** Tel: 800.366.2266 • **Europe** Tel: +353.21.244.6400
 • **India** Tel: +91.80.43537383 • **China** Tel: +86.21.2407.1588
 Visit www.macomtech.com for additional data sheets and product information.

M/A-COM Technology Solutions Inc. and its affiliates reserve the right to make changes to the product(s) or information contained herein without notice.

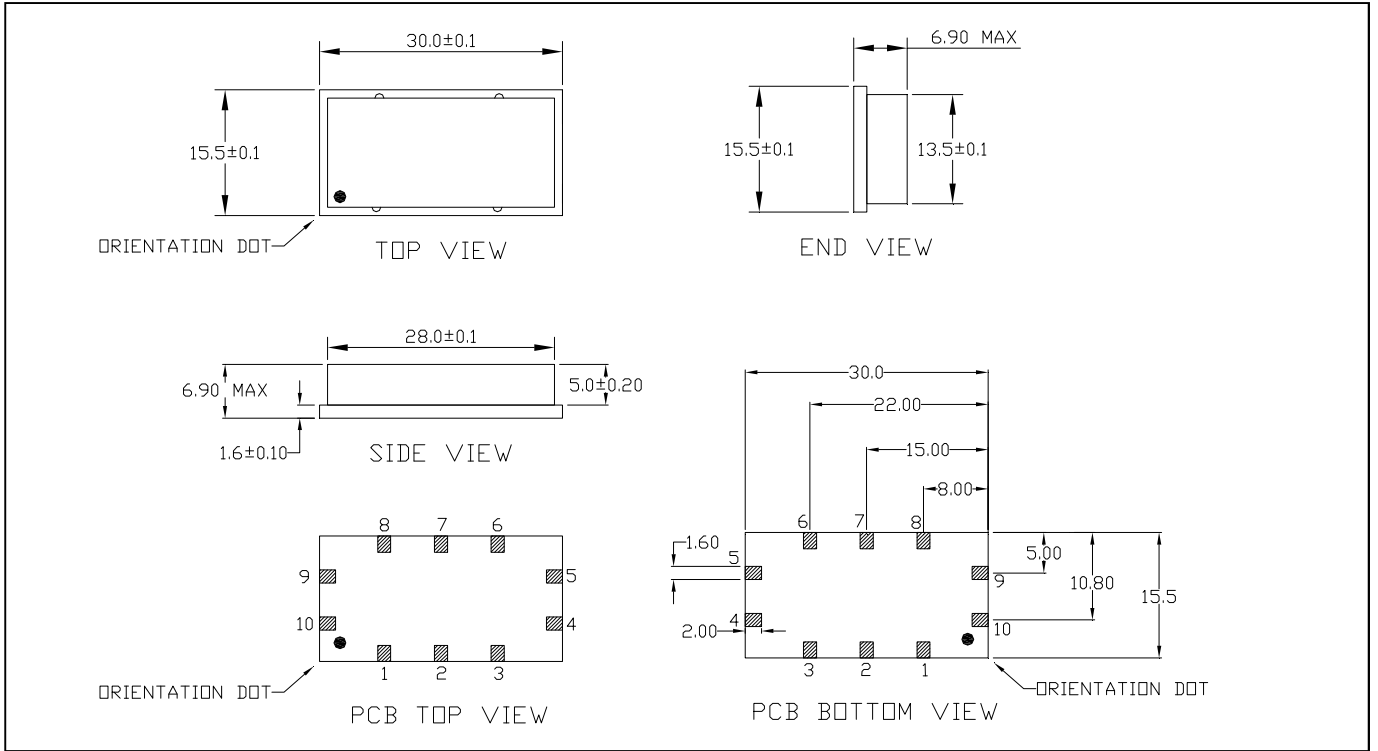
MAFL-009272-CD0AC0



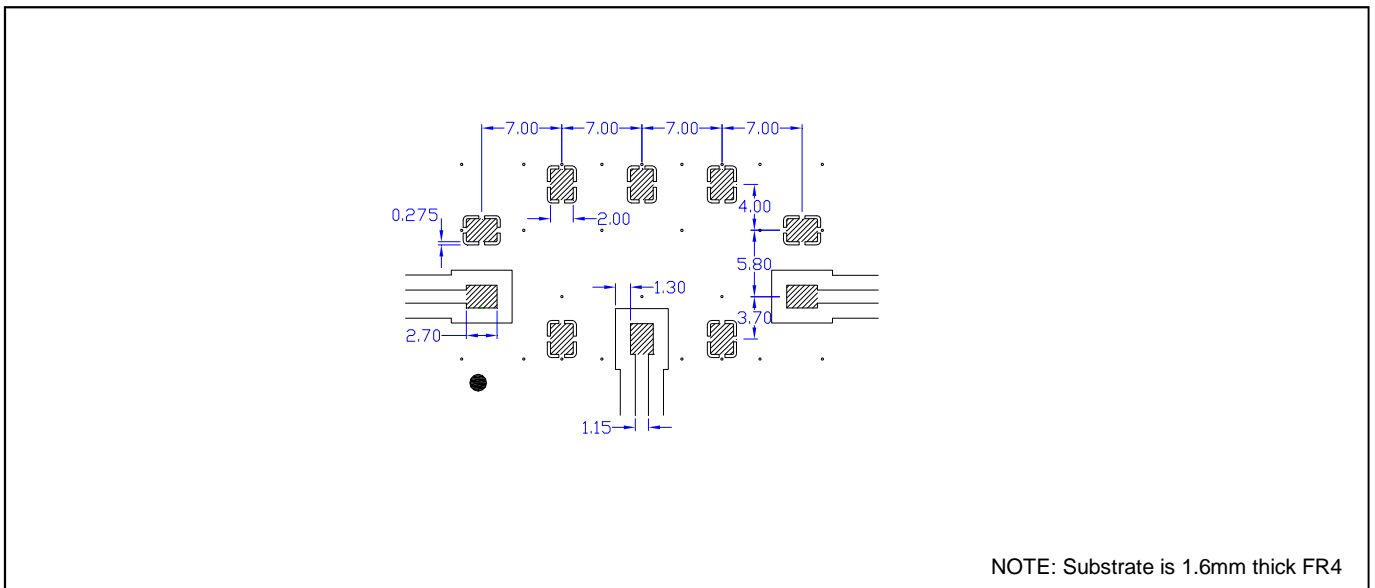
CATV Diplex Filter
5 - 1002 / 1125 - 1675 MHz

M/A-COM Products
V5

Outline Drawing: SM-172



Recommended PCB Configuration



Dimensions in mm. Tolerance: .x ± 0.1, .xx ± 0.05 unless otherwise noted

ADVANCED: Data Sheets contain information regarding a product M/A-COM Technology Solutions is considering for development. Performance is based on target specifications, simulated results, and/or prototype measurements. Commitment to develop is not guaranteed.
PRELIMINARY: Data Sheets contain information regarding a product M/A-COM Technology Solutions has under development. Performance is based on engineering tests. Specifications are typical. Mechanical outline has been fixed. Engineering samples and/or test data may be available. Commitment to produce in volume is not guaranteed.

• **North America** Tel: 800.366.2266 • **Europe** Tel: +353.21.244.6400
 • **India** Tel: +91.80.43537383 • **China** Tel: +86.21.2407.1588
 Visit www.macomtech.com for additional data sheets and product information.

M/A-COM Technology Solutions Inc. and its affiliates reserve the right to make changes to the product(s) or information contained herein without notice.

MAFL-009272-CD0AC0

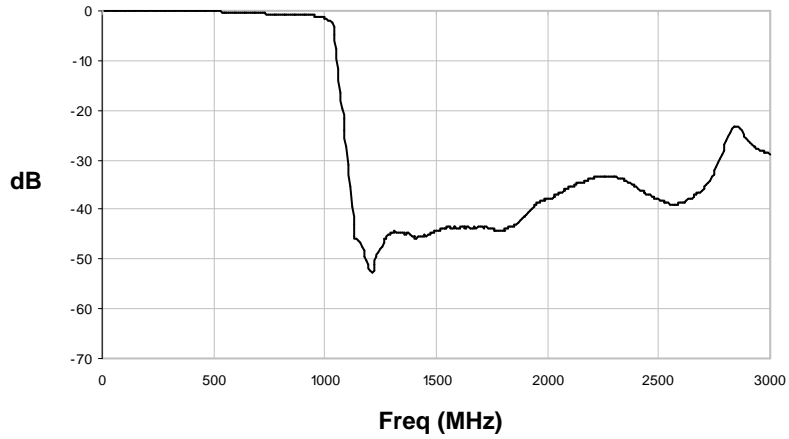


CATV Diplex Filter
5 - 1002 / 1125 - 1675 MHz

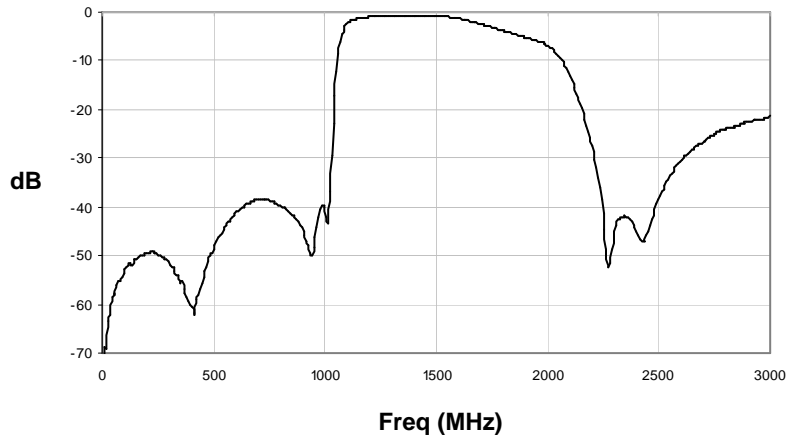
M/A-COM Products
V5

Typical Performance Curves at +25°C

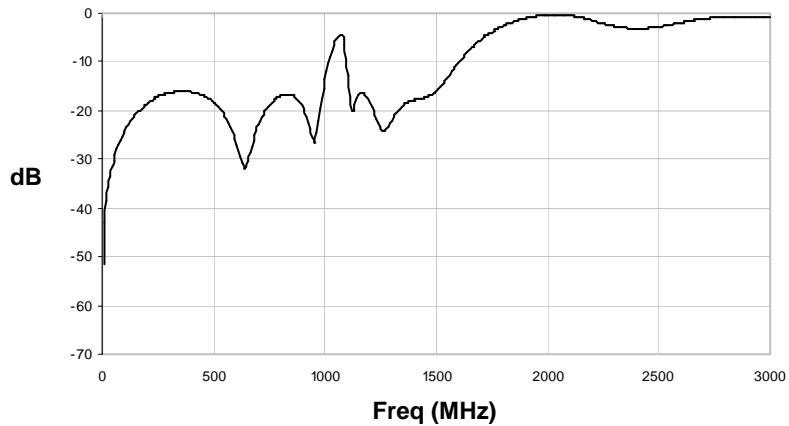
Common to Low pass



Common to High pass



Common Port Return Loss



ADVANCED: Data Sheets contain information regarding a product M/A-COM Technology Solutions is considering for development. Performance is based on target specifications, simulated results, and/or prototype measurements. Commitment to develop is not guaranteed.
PRELIMINARY: Data Sheets contain information regarding a product M/A-COM Technology Solutions has under development. Performance is based on engineering tests. Specifications are typical. Mechanical outline has been fixed. Engineering samples and/or test data may be available. Commitment to produce in volume is not guaranteed.

• **North America** Tel: 800.366.2266 • **Europe** Tel: +353.21.244.6400
• **India** Tel: +91.80.43537383 • **China** Tel: +86.21.2407.1588
Visit www.macomtech.com for additional data sheets and product information.

M/A-COM Technology Solutions Inc. and its affiliates reserve the right to make changes to the product(s) or information contained herein without notice.

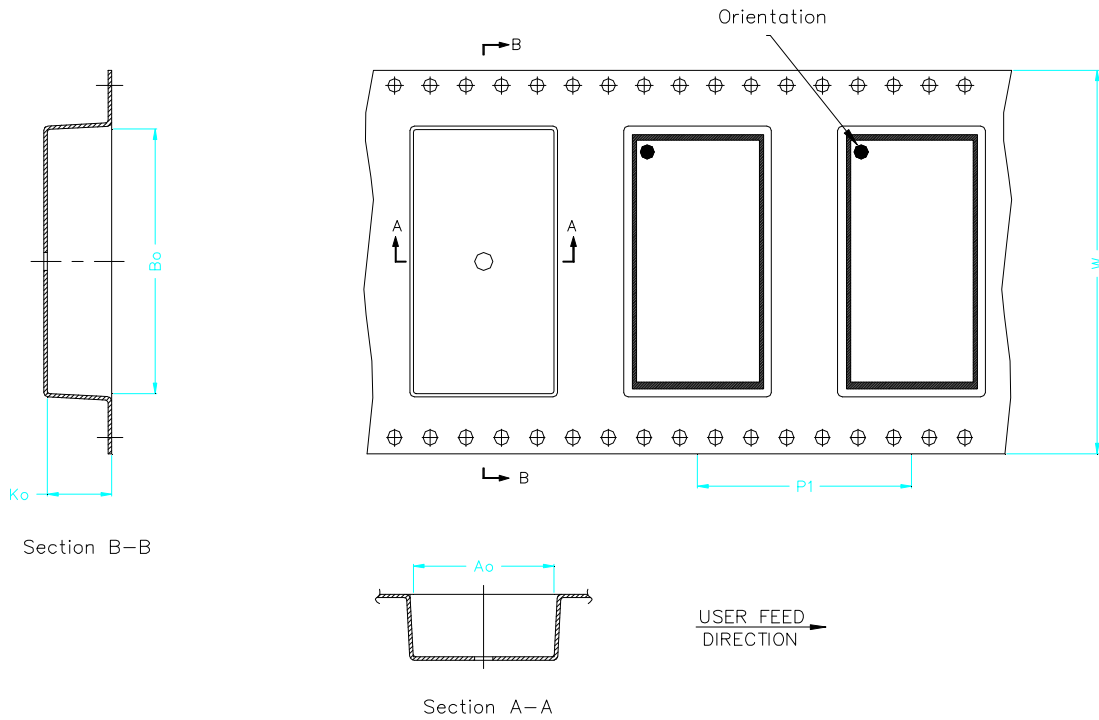
MAFL-009272-CD0AC0



CATV Diplex Filter
5 - 1002 / 1125 - 1675 MHz

M/A-COM Products
V5

Tape Specification



Item	Dimension
Ao	15.80mm +/- 0.1mm
Bo	30.30mm +/- 0.1mm
Ko	7.20mm +/- 0.1mm
W	44.00mm +/- 0.3mm
P1	24.00mm +/- 0.1mm

ADVANCED: Data Sheets contain information regarding a product M/A-COM Technology Solutions is considering for development. Performance is based on target specifications, simulated results, and/or prototype measurements. Commitment to develop is not guaranteed.
PRELIMINARY: Data Sheets contain information regarding a product M/A-COM Technology Solutions has under development. Performance is based on engineering tests. Specifications are typical. Mechanical outline has been fixed. Engineering samples and/or test data may be available. Commitment to produce in volume is not guaranteed.

• **North America** Tel: 800.366.2266 • **Europe** Tel: +353.21.244.6400
 • **India** Tel: +91.80.43537383 • **China** Tel: +86.21.2407.1588
 Visit www.macomtech.com for additional data sheets and product information.

M/A-COM Technology Solutions Inc. and its affiliates reserve the right to make changes to the product(s) or information contained herein without notice.