

## GaAs SPST High Isolation Terminated Switch 0.3 - 4.0 GHz

Rev. V1

### Features

- High Isolation: 55 dB @ 2 GHz
- Insertion Loss: 1.6 dB @ 2 GHz
- Terminated RF Input in Isolation State
- Single Positive Control
- CMOS Compatible Logic
- Lead-Free 3 mm 12-Lead PQFN Package
- 100% Matte Tin Plating over Copper
- Halogen-Free "Green" Mold Compound
- RoHS\* Compliant and 260°C Reflow Compatible

### Description

M/A-COM's MASWSS0148 is a GaAs monolithic single pole single throw (SPST) terminated switch in a lead-free 3 mm 12-lead PQFN plastic package. The MASWSS0148 is ideally suited for use where low power consumption, small size and high isolation are required.

Typical applications include PCS and GSM LO switching, switch matrices and switched filter banks in systems such as radio and cellular equipment.

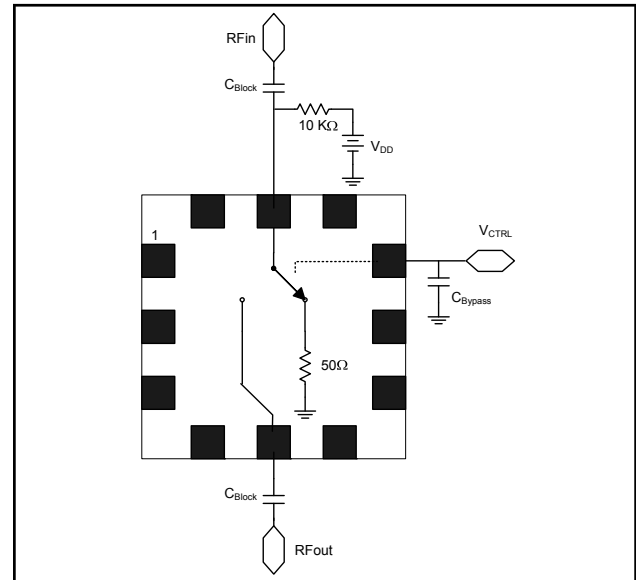
The MASWSS0148 is fabricated using a mature 1-micron gate length GaAs MESFET process. The process features full chip passivation for increased performance and reliability.

### Ordering Information<sup>1</sup>

Part Number	Package
MASWSS0148TR-3000	3000 piece reel
MASWSS0148SMB	Sample Test Board

1. Reference Application Note M513 for reel size information.

### Schematic with Off-Chip Components<sup>2</sup>



2. VDD can be injected at either pin 5 or pin 11.

### Pin Configuration

Pin No.	Function	Pin No.	Function
1	No Connection	7	No Connection
2	No Connection	8	No Connection
3	No Connection	9	V <sub>CTRL</sub>
4	No Connection	10	No Connection
5	RF Output	11	RF Input
6	No Connection	12	No Connection
		13	Paddle <sup>3</sup>

3. The exposed pad centered on the package bottom must be connected to RF and DC ground.

### Absolute Maximum Ratings<sup>4,5</sup>

Parameter	Absolute Maximum
Input Power	23 dBm (V <sub>DD</sub> = V <sub>CTRL</sub> = 5 V)
Operating Voltage (V <sub>DD</sub> , V <sub>CTRL</sub> )	8.5 V
Operating Temperature	-40°C to +85°C
Storage Temperature	-65°C to +125°C

4. Exceeding any one or combination of these limits may cause permanent damage to this device.

5. M/A-COM does not recommend sustained operation near these survivability limits.

\* Restrictions on Hazardous Substances, European Union Directive 2002/95/EC.

**ADVANCED:** Data Sheets contain information regarding a product M/A-COM Technology Solutions is considering for development. Performance is based on target specifications, simulated results, and/or prototype measurements. Commitment to develop is not guaranteed.

**PRELIMINARY:** Data Sheets contain information regarding a product M/A-COM Technology Solutions has under development. Performance is based on engineering tests. Specifications are typical. Mechanical outline has been fixed. Engineering samples and/or test data may be available. Commitment to produce in volume is not guaranteed.

• **North America** Tel: 800.366.2266 / Fax: 978.366.2266

• **Europe** Tel: 44.1908.574.200 / Fax: 44.1908.574.300

• **Asia/Pacific** Tel: 81.44.844.8296 / Fax: 81.44.844.8298

Visit [www.macomtech.com](http://www.macomtech.com) for additional data sheets and product information.

M/A-COM Technology Solutions Inc. and its affiliates reserve the right to make changes to the product(s) or information contained herein without notice.

## GaAs SPST High Isolation Terminated Switch 0.3 - 4.0 GHz

Rev. V1

**Electrical Specifications:  $T_A = 25^\circ\text{C}$ ,  $V_{DD} = 5\text{ V}$ ,  $V_{CTRL} = 0 / 5\text{ V}$ , 100 pF capacitors,  $Z_0 = 50\ \Omega$  <sup>6</sup>**

Parameter	Test Conditions	Units	Min.	Typ.	Max.
Insertion Loss <sup>7</sup>	0.3 - 1.0 GHz	dB	—	1.5	1.7
	1.0 - 2.0 GHz	dB	—	1.6	—
	2.0 - 3.0 GHz	dB	—	1.7	—
	3.0 - 4.0 GHz	dB	—	1.75	—
Isolation	1.0 GHz	dB	50	55	—
	2.0 GHz	dB	—	55	—
	3.0 GHz	dB	—	48	—
	4.0 GHz	dB	—	40	—
Return Loss	Insertion Loss State, 0.3 - 4.0 GHz	dB	—	17	—
Input Return Loss	Isolation State	dB	—	20	—
Input 1 dB Compression	—	dBm	—	27	—
Trise, Tfall	10% to 90% RF	$\mu\text{S}$	—	3	—
	90% to 10% RF	$\mu\text{S}$	—	0.3	—
Ton, Toff	50% Control to 90% RF	$\mu\text{S}$	—	3.5	—
	50% Control to 10% RF	$\mu\text{S}$	—	0.4	—
Transients	In-Band	mV	—	20	—
Input IP <sub>2</sub>	2-Tone, 5 MHz spacing, +10 dBm / tone	dBm	—	72	—
Input IP <sub>3</sub>	2-Tone, 5 MHz spacing, +10 dBm / tone	dBm	—	49	—
Current (I <sub>CTRL</sub> )	Input Power = 10 dBm	$\mu\text{A}$	—	1	6
Current (I <sub>DD</sub> )	Input Power = 10 dBm	$\mu\text{A}$	—	1	6

6. For positive voltage control, external DC blocking capacitors are required on all RF ports.

7. Insertion loss can be optimized by varying the DC blocking capacitor value, e.g. 1000 pF for 300 MHz - 1 GHz, 39 pF for 0.5 GHz - 4 GHz.

### Truth Table <sup>8,9</sup>

V <sub>CTRL</sub>	RFin	RFout
0	50 $\Omega$ Termination	Open
1	RFout	RFin

8. Differential voltage, V(state 1) - V(state 0), must be +2.5 V minimum and must not exceed 8.5 V.

9. 0 = 0 V  $\pm$  0.2 V, 1 = VDD = 2.5 V to 8.5 V

### Handling Procedures

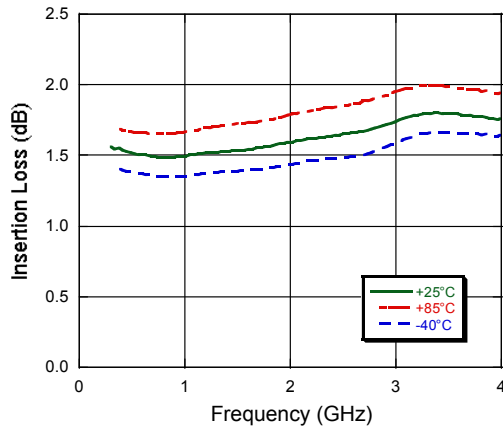
Please observe the following precautions to avoid damage:

### Static Sensitivity

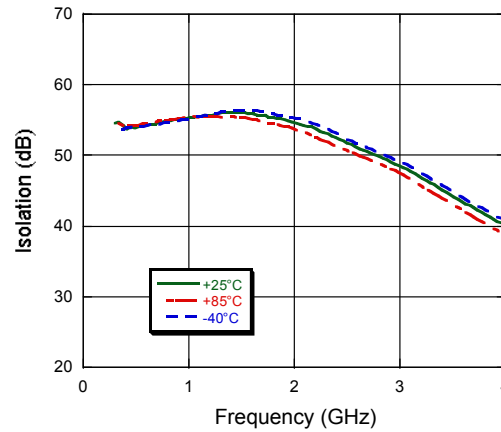
Gallium Arsenide Integrated Circuits are sensitive to electrostatic discharge (ESD) and can be damaged by static electricity. Proper ESD control techniques should be used when handling these devices.

### Typical Performance Curves ( $V_{DD} = 5\text{ V}$ , $V_{CTRL} = 0 / 5\text{ V}$ , 100 pF capacitors)

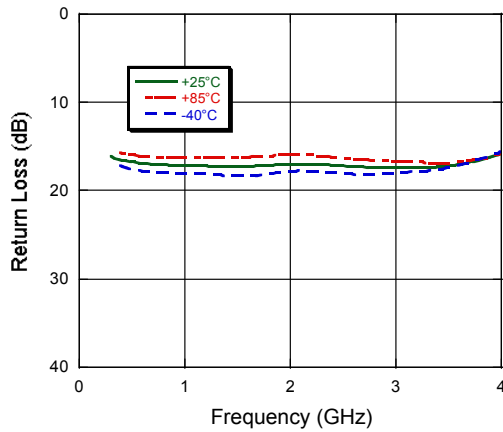
#### Insertion Loss



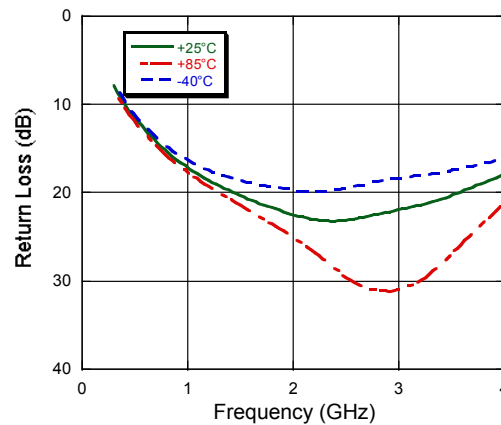
#### Isolation



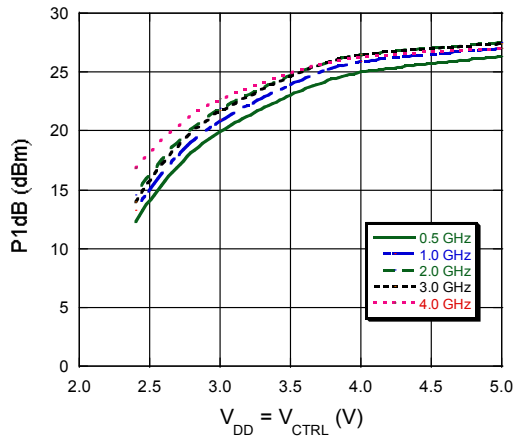
#### Return Loss (Insertion Loss State)



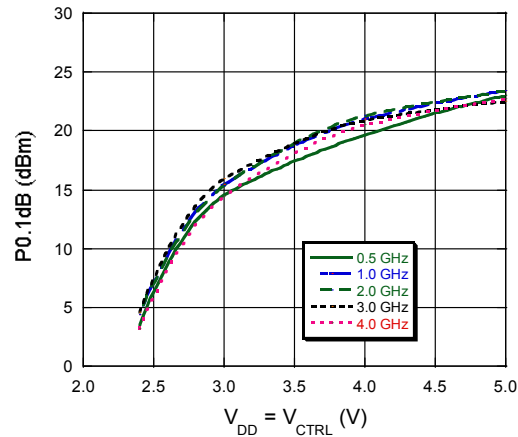
#### Input Return Loss (Isolation State)



#### P1dB



#### P0.1dB

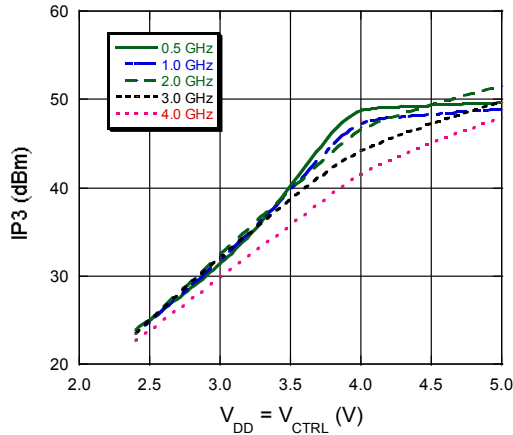


## GaAs SPST High Isolation Terminated Switch 0.3 - 4.0 GHz

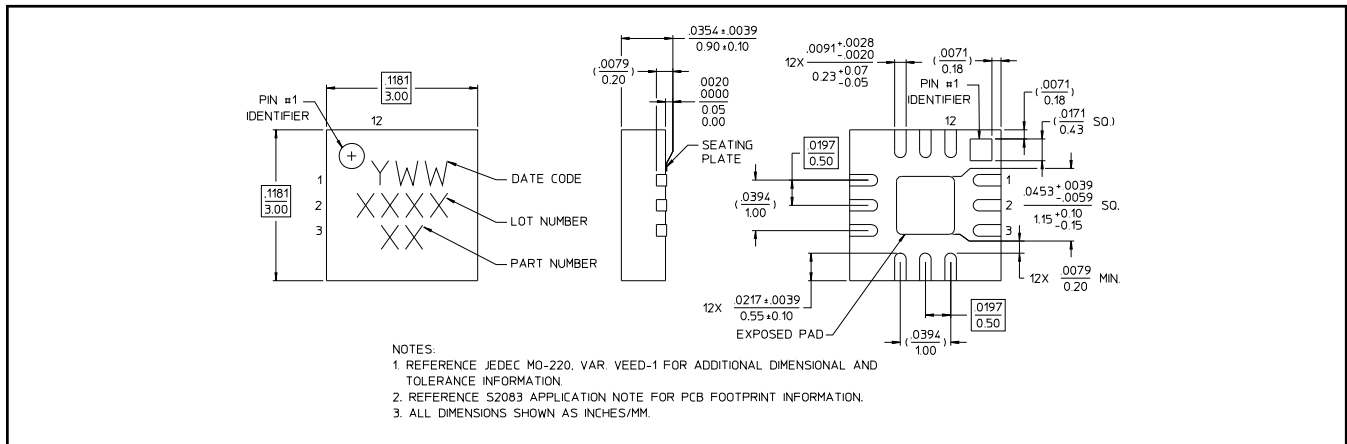
Rev. V1

### Typical Performance Curves ( $V_{DD} = 5\text{ V}$ , $V_{CTRL} = 0 / 5\text{ V}$ , 100 pF capacitors)

#### IP3



### Lead-Free 3 mm 12-Lead PQFN†



† Reference Application Note M538 for lead-free solder reflow recommendations.

**ADVANCED:** Data Sheets contain information regarding a product M/A-COM Technology Solutions is considering for development. Performance is based on target specifications, simulated results, and/or prototype measurements. Commitment to develop is not guaranteed.  
**PRELIMINARY:** Data Sheets contain information regarding a product M/A-COM Technology Solutions has under development. Performance is based on engineering tests. Specifications are typical. Mechanical outline has been fixed. Engineering samples and/or test data may be available. Commitment to produce in volume is not guaranteed.

- **North America** Tel: 800.366.2266 / Fax: 978.366.2266
- **Europe** Tel: 44.1908.574.200 / Fax: 44.1908.574.300
- **Asia/Pacific** Tel: 81.44.844.8296 / Fax: 81.44.844.8298

Visit [www.macomtech.com](http://www.macomtech.com) for additional data sheets and product information.

M/A-COM Technology Solutions Inc. and its affiliates reserve the right to make changes to the product(s) or information contained herein without notice.