

MITSUBISHI IGBT MODULES
CM600DY-12NF

HIGH POWER SWITCHING USE

CM600DY-12NF



- IC 600A
- VCES 600V
- Insulated Type
- 2-elements in a pack

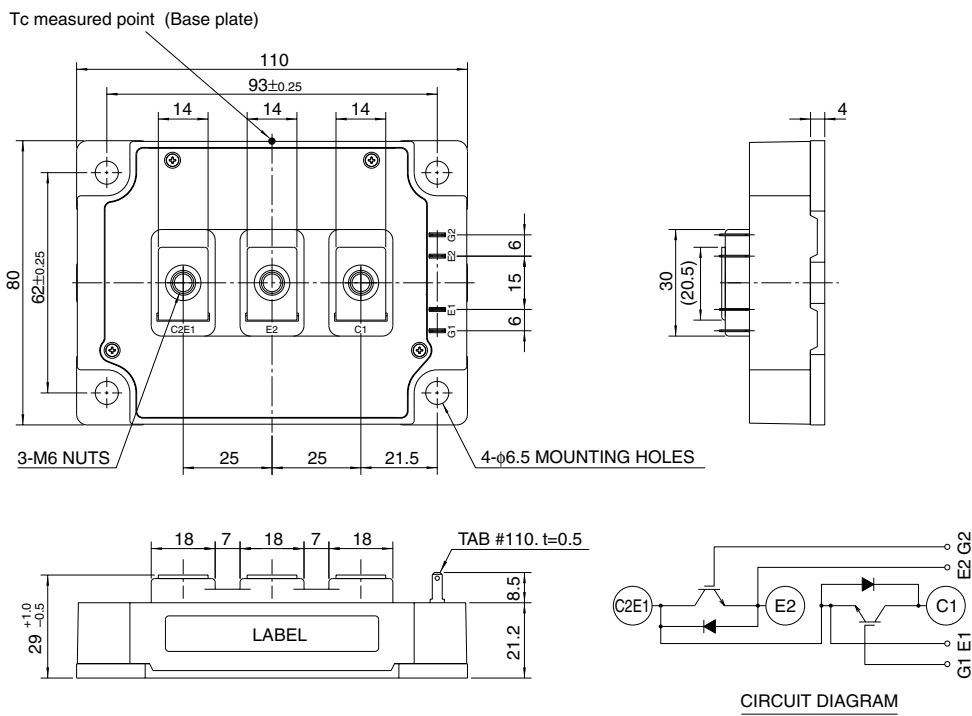
APPLICATION

General purpose inverters & Servo controls, etc

OUTLINE DRAWING & CIRCUIT DIAGRAM

Dimensions in mm

www.BDTIC.com/MITSUBISHI



CM600DY-12NF

HIGH POWER SWITCHING USE

MAXIMUM RATINGS (Tj = 25°C)

Symbol	Parameter	Conditions	Ratings	Unit
V _{CE} S	Collector-emitter voltage	G-E Short	600	V
V _{GE} S	Gate-emitter voltage	C-E Short	±20	V
I _C	Collector current	DC, T _c ' = 89°C ^{*3}	600	A
I _{CM}		Pulse (Note 2)	1200	A
I _E (Note 1)	Emitter current		600	A
I _{EM} (Note 1)		Pulse (Note 2)	1200	A
P _C (Note 3)	Maximum collector dissipation	T _c = 25°C	1130	W
T _j	Junction temperature		-40 ~ +150	°C
T _{stg}	Storage temperature		-40 ~ +125	°C
V _{iso}	Isolation voltage	Main Terminal to base plate, AC 1 min.	2500	V
—	Torque strength	Main Terminal M6	3.5 ~ 4.5	N • m
—		Mounting holes M6	3.5 ~ 4.5	N • m
—	Weight	Typical value	580	g

ELECTRICAL CHARACTERISTICS (Tj = 25°C)

Symbol	Parameter	Test conditions	Limits			Unit
			Min.	Typ.	Max.	
I _{CE} S	Collector cutoff current	V _{CE} = V _{CE} S, V _{GE} = 0V	—	—	1	mA
V _{GE(th)}	Gate-emitter threshold voltage	I _C = 60mA, V _{CE} = 10V	5	6	7.5	V
I _{GE} S	Gate leakage current	V _{GE} = V _{GE} S, V _{CE} = 0V	—	—	0.5	µA
V _{CE(sat)}	Collector-emitter saturation voltage	T _j = 25°C	—	1.7	2.2	V
		T _j = 25°C	I _C = 600A, V _{GE} = 15V	—	1.7	2.2
C _{iss}	Input capacitance	V _{CE} = 10V	—	—	10	nF
C _{oss}	Output capacitance	V _{CE} = 10V	—	—	11	nF
C _{res}	Reverse transfer capacitance	V _{GE} = 0V	—	—	3.6	nF
Q _G	Total gate charge	V _{CC} = 300V, I _C = 600A, V _{GE} = 15V	—	2400	—	nC
t _{d(on)}	Turn-on delay time		—	—	500	ns
t _r	Turn-on rise time	V _{CC} = 300V, I _C = 600A	—	—	300	ns
t _{d(off)}	Turn-off delay time	V _{GE1} = V _{GE2} = 15V	—	—	750	ns
t _f	Turn-off fall time	R _G = 4.2Ω, Inductive load switching operation	—	—	300	ns
t _{rr} (Note 1)	Reverse recovery time	I _E = 600A	—	—	250	ns
Q _{rr} (Note 1)	Reverse recovery charge		—	8.7	—	µC
V _{EC} (Note 1)	Emitter-collector voltage	I _E = 600A, V _{GE} = 0V	—	—	2.6	V
R _{th(j-c)Q}	Thermal resistance ^{*1}	IGBT part (1/2 module)	—	—	0.11	°C/W
R _{th(j-c)R}		FWDi part (1/2 module)	—	—	0.18	°C/W
R _{th(c-f)}	Contact thermal resistance	Case to fin, Thermal compound Applied ^{*2} (1/2 module)	—	0.02	—	°C/W
R _{th(j-c')Q}	Thermal resistance	T _c measured point is just under the chips	—	—	0.046 ^{*3}	°C/W
R _G	External gate resistance		1.0	—	10	Ω

*1 : T_c measured point is shown in page OUTLINE DRAWING.

*2 : Typical value is measured by using Shin-etsu Silicone "G-746".

*3 : T_c' measured point is just under the chips.

If you use this value, R_{th(f-a)} should be measured just under the chips.

Note 1. I_E, V_{EC}, t_{rr} & Q_{rr} represent characteristics of the anti-parallel, emitter to collector free-wheel diode (FWDi).

2. Pulse width and repetition rate should be such that the device junction temp. (T_j) does not exceed T_{jmax} rating.

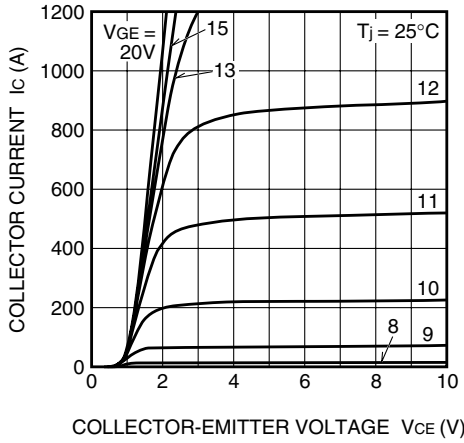
3. Junction temperature (T_j) should not increase beyond 150°C.

CM600DY-12NF

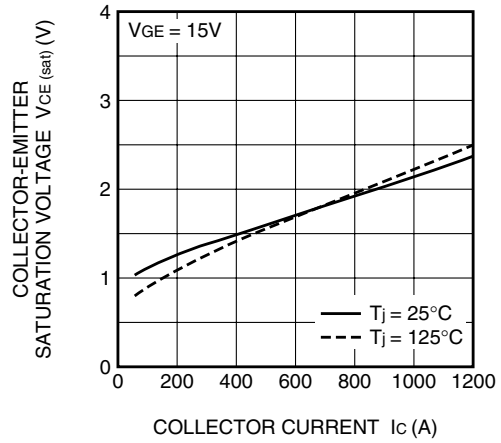
HIGH POWER SWITCHING USE

PERFORMANCE CURVES

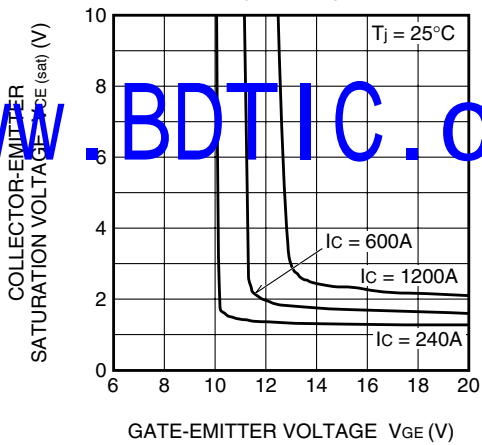
OUTPUT CHARACTERISTICS (TYPICAL)



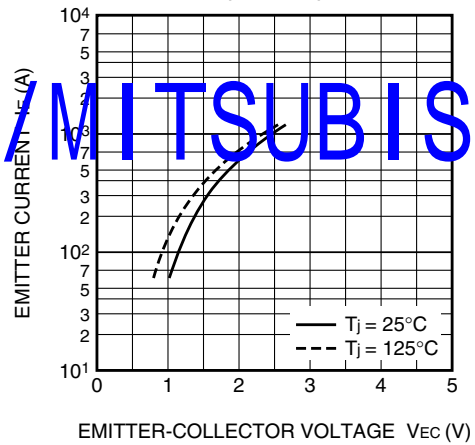
COLLECTOR-EMITTER SATURATION VOLTAGE CHARACTERISTICS (TYPICAL)



COLLECTOR-EMITTER SATURATION VOLTAGE CHARACTERISTICS (TYPICAL)

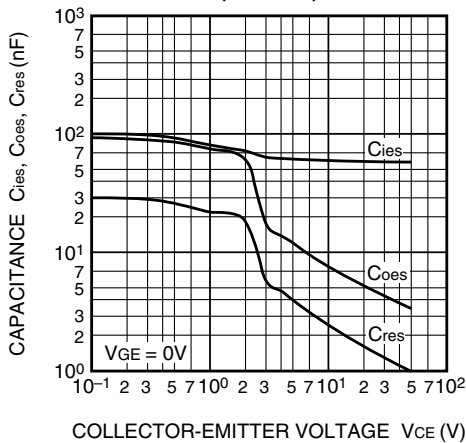


FREE-WHEEL DIODE FORWARD CHARACTERISTICS (TYPICAL)

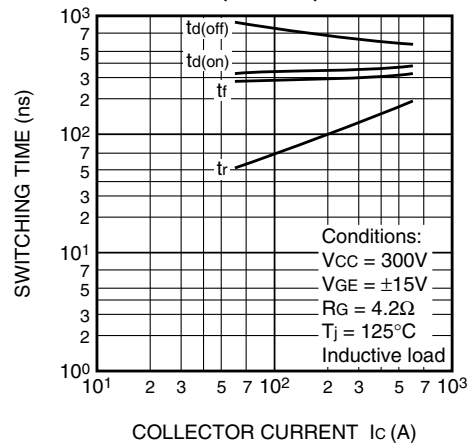


www.BDTIC.com/MITSUBISHI

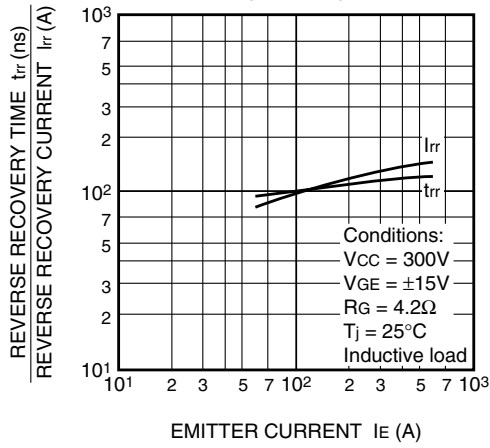
CAPACITANCE-VCE CHARACTERISTICS (TYPICAL)



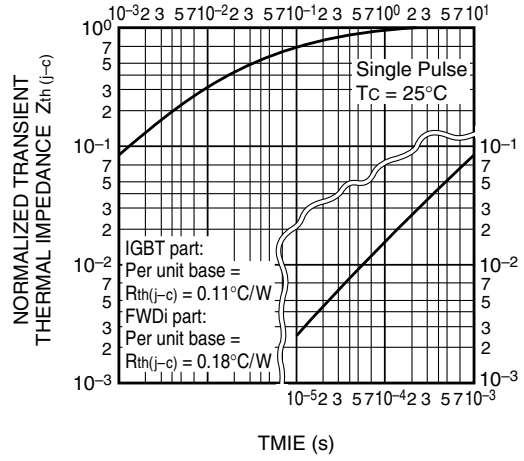
HALF-BRIDGE SWITCHING CHARACTERISTICS (TYPICAL)



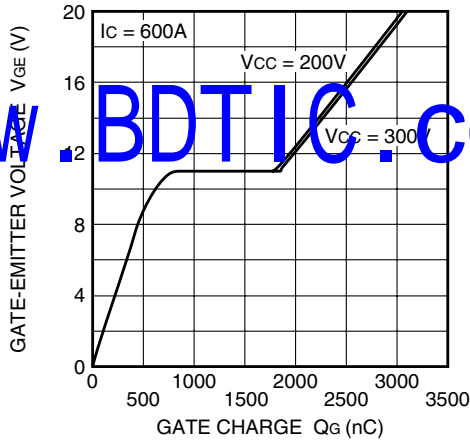
REVERSE RECOVERY CHARACTERISTICS OF FREE-WHEEL DIODE (TYPICAL)



TRANSIENT THERMAL IMPEDANCE CHARACTERISTICS (IGBT part & FWDi part)



GATE CHARGE CHARACTERISTICS (TYPICAL)



www.BDTIC.com/MITSUBISHI