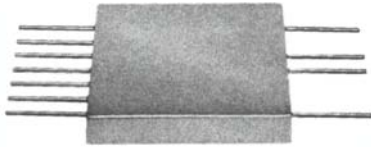


PS-4-1000F  
Four-way Power  
Divider/Combiner  
25-1000 MHz



**DESCRIPTION**

The PS-4 series is comprised of one 500 MHz 4 way divider, and two 1000 MHz 4 way dividers, either bandwidth is available in either flatpack or SMA equipped packages.

These dividers are known for their excellent amplitude and phase tracking over wide bandwidths. A signal at the input divides into four equal, in-phase signals at the outputs. Four signals at the outputs combine vectorially at the input connector.

**GUARANTEED MINIMUM PERFORMANCE DATA**

Isolation dB	17
- 1 dB Bandwidth, MHz	25-1000
Midband insertion loss dB	.8
Amplitude unbalance dB	.25
Phase unbalance°	4
VSWR	1.75

**ABSOLUTE MAXIMUM RATINGS:**

Input power 1 W (1/20 Watt Internal Load Dissipation)  
Temperature Range - 54°C to + 100°C

**ENVIRONMENTAL CONDITIONS**

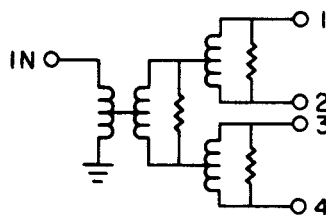
**GUARANTEED ENVIRONMENTAL PERFORMANCE:**

All units are designed to meet their specifications over - 54°C to + 100°C and after exposure to any or all of the following tests per MIL-STD-202E.

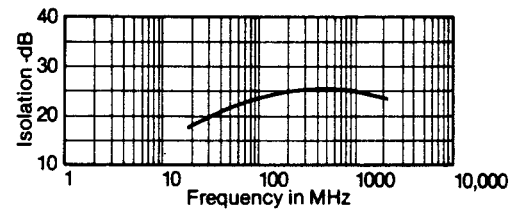
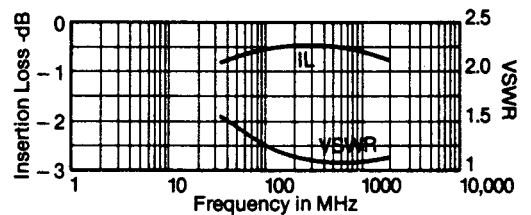
Exposure	Method	Test Condition
Thermal Shock	107D	B
Altitude	105C	G
H.F. Vibration	204C	D
Mechanical Shock	213B	C
Random Vibration	214	IIF
(15 minutes per axis)		
Solderability	208C	
Terminal Strength	211A	C
Resistance to Soldering Heat	210A	B

Sealed units, meet the requirements of Method 106D of MIL-STD-202E when exposed to humidity.

**FUNCTIONAL SCHEMATIC**



**TYPICAL PERFORMANCE**



**PACKAGE**

**CASE MATERIAL:**

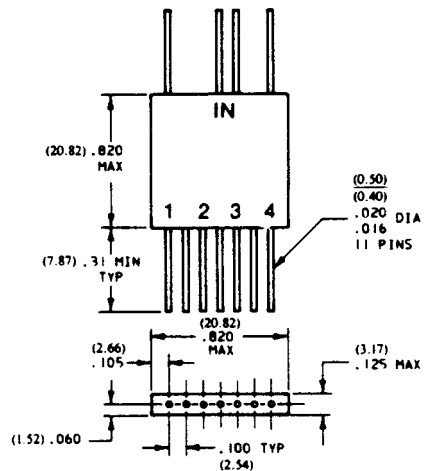
F-15 Kovar per ASTM Standard F15-68, (Chemical composition per MIL-STD-1276, Type K)

**FINISH:**

Plating, all metal parts: gold per MIL-G-45204, Type I, Grade A, Class 1, over nickel per MIL-C-26074, Class 1

**LEADS:**

Kovar per MIL-STD-1276, Type K



ALL UNLABELED PINS ARE CASE GROUND  
TOL. .XXX ± .010 (XX = .25)

Specifications subject to change without notice.

8.10.04 Rev. A