

DESCRIPTION

The PS-4 series is comprised of one 500 MHz 4 way divider, and two 1000 MHz 4 way dividers, either bandwidth is available in either flatpack or SMA equipped packages.

These dividers are known for their excellent amplitude and phase tracking over wide bandwidths. A signal at the input divides into four equal, in-phase signals at the outputs. Four signals at the outputs combine vectorially at the input connector.

GUARANTEED MINIMUM PERFORMANCE DATA

Isolation dB	20
-1 dB Bandwidth, MHz	5-500
Midband insertion loss dB	.50
Amplitude unbalance dB	.2
Phase unbalance°	2
VSWR	1.4

ABSOLUTE MAXIMUM RATINGS:

Input power 1 W (1/20 Watt Internal Load Dissipation)
Temperature Range - 54°C to +100°C

ENVIRONMENTAL CONDITIONS

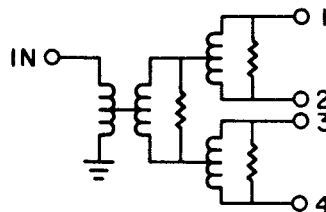
GUARANTEED ENVIRONMENTAL PERFORMANCE:

All units are designed to meet their specifications over - 54°C to +100°C and after exposure to any or all of the following tests per MIL-STD-202E.

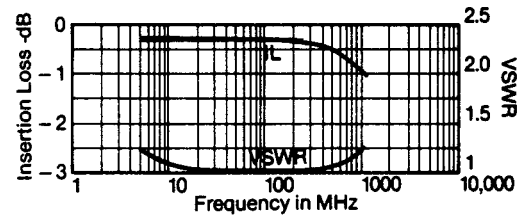
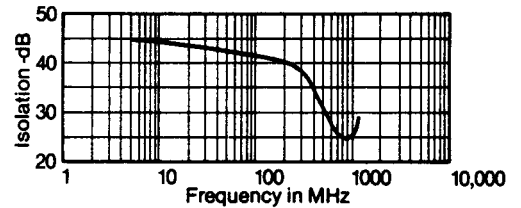
Exposure	Method	Test Condition
Thermal Shock	107D	B
Altitude	105C	G
H.F. Vibration	204C	D
Mechanical Shock	213B	C
Random Vibration (15 minutes per axis)	214	IIF
Solderability	208C	
Terminal Strength	211A	C
Resistance to Soldering Heat	210A	B

Sealed units, meet the requirements of Method 106D of MIL-STD-202E when exposed to humidity.

FUNCTIONAL SCHEMATIC



TYPICAL PERFORMANCE



PACKAGE

CASE MATERIAL:

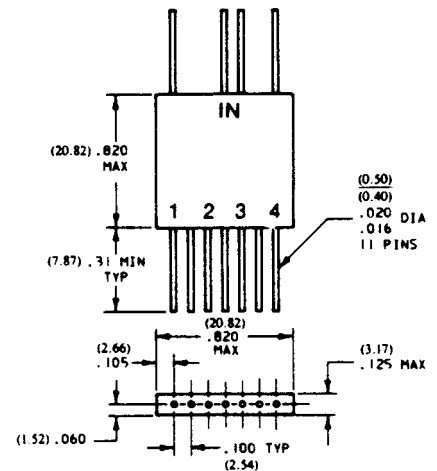
F-15 Kovar per ASTM Standard F15-68, (Chemical composition per MIL-STD-1276, Type K)

FINISH:

Plating, all metal parts: gold per MIL-G-45204, Type I, Grade A, Class 1, over nickel per MIL-C-26074, Class 1

LEADS:

Kovar per MIL-STD-1276, Type K



ALL UNLABELED PINS ARE CASE GROUND
TOL. .XXX ± .010 (XX ± .25)

Specifications subject to change without notice.

8.10.04 Rev. A