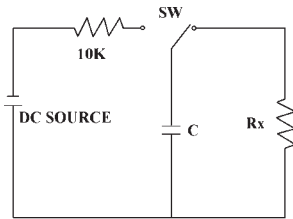
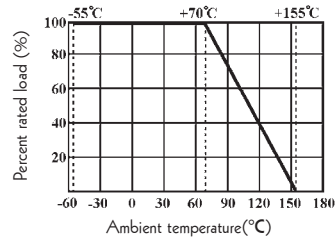


Surge Withstanding Voltage



Discharge cycle: 2.5 seconds "ON", 2.5 seconds "OFF", 50 cycles, C=0.001uF
The applied DC source voltage is shown as below table

Derating Curve



Specification



| Part No. | Type | Power Rating at 70°C | Dimension(mm) | | | | Max. Working Voltage | Max. Overload Voltage | Dielectric Withstanding Voltage | Surge Withstanding Voltage | Resistance Range |
|----------|-----------|----------------------|---------------|--------|--------|-----|----------------------|-----------------------|---------------------------------|----------------------------|------------------------------|
| | | | D Max. | L Max. | d±0.05 | H±3 | | | | | |
| HMGR 0W4 | HMGR-25 | 1/4W | 2.7 | 7.0 | 0.6 | 28 | 500 | 1,000V | 700V | 10 KV | 500K-510MΩ (1% 2% 5% 10%) |
| HMGR 0W2 | HMGR-50 | 1/2W | 4 | 10 | 0.6 | 28 | 1,000V | 2,000V | 700V | | |
| HMGR 01W | HMGR -100 | 1W | 4.7 | 13 | 0.7 | 28 | 2,000V | 3,000V | 1,000V | 10 KV | 500K-1GΩ (1% 2% 5% 10%) |
| HMGR 02W | HMGR -200 | 2W | 6 | 17 | 0.8 | 28 | 3,000V | 4,000V | 1,000V | | |

Ordering Procedure (Example: HMGR 1W 5% 200MΩ T/B -1000)

