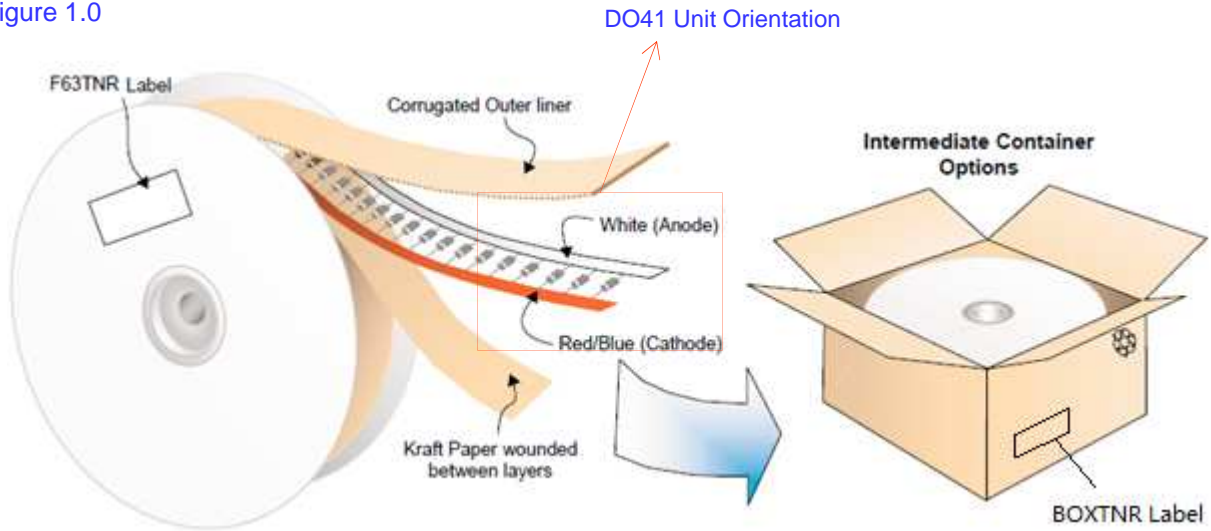
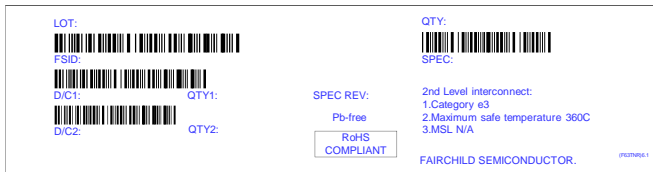


DO41 Packing Configuration:  
Figure 1.0

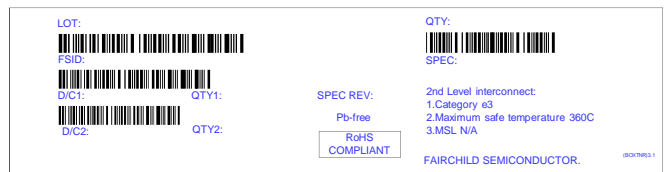


DO41 Packing Information		
Packing Option	Standard	F056 Option (lead bend)
Packing type	TNR	BULK
Qty per Reel/Tube/Bag	4,000	2,000
Reel Size	13" Dia	NA
Max qty per Box	20,000	8,000

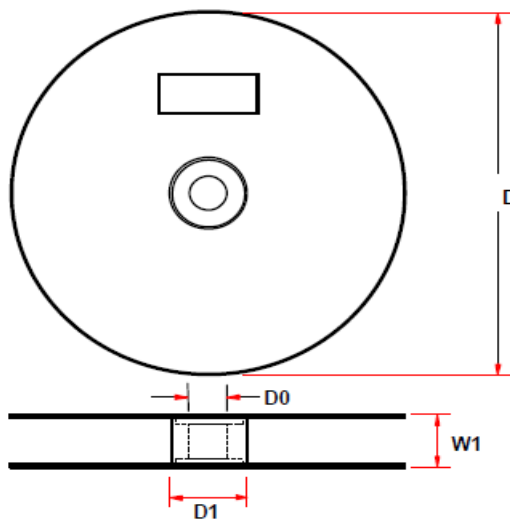
Reel Barcode Label Sample\_(F63TNR)



Inner Box Barcode Label Sample\_(BOXTNR)



DO41 Reel Dimension  
Figure 2.0

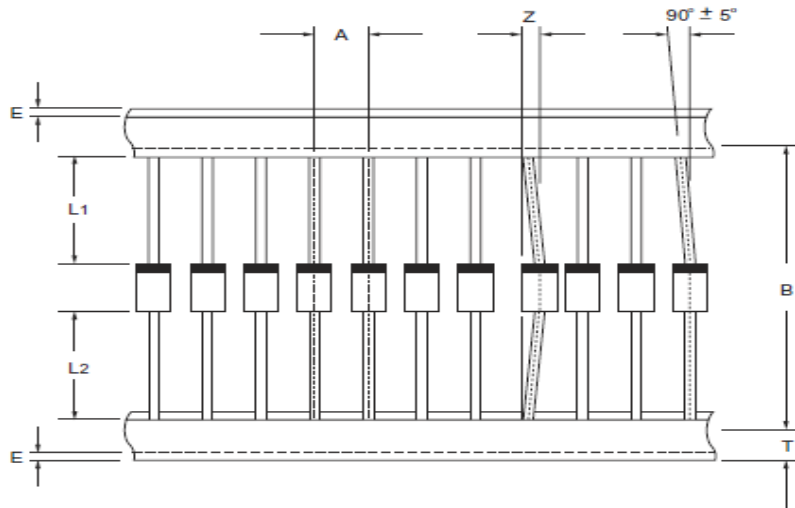


ITEM	SYMBOL	SPEC. (inch)	SPEC. (mm)	Cumulative Pitch Tolerance
<b>REEL DIMENSIONS:</b>				
Reel outside diameter	D	13.0	330.0	
Reel inner diameter	D1	3.375 ± 0.012	85.7 ± 0.3	
Feed hole diameter	D0	0.655 ± 0.016	16.6 ± 0.4	
Reel width	W	3.110 ± 0.040	79.0 ± 1.0	

DO41 Taping Dimension for standard option  
 Figure 3.0

Axial lead devices are packed in accordance with EIA standard RS-296-E and specifications given below.

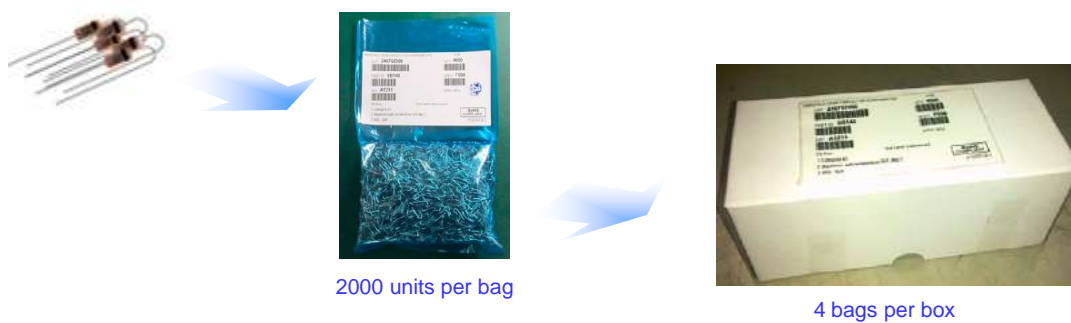
COMPONENT OUTLINE	COMPONENT PITCH A ± 0.5mm	INTER TAPE PITCH B ± 1.0mm	CUMULATIVE PITCH TOLERANCE
DO-41	5.0mm	52.0mm	1.0mm/20pitch



ITEM	SYMBOL	SPECIFICATIONS(mm)	SPECIFICATIONS(inch)
Component alignment	Z	1.2max	0.048max
Tape width	T	6.0±0.4	0.236±0.016
Exposed adhesive	E	0.8max	0.032max
Body eccentricity	L1-L2	1.0max	0.040max

NOTES: Each component lead shall be sandwiched between tapes for a minimum of 3.2mm (0.126")

DO41 Bulk Packaging Configuration for lead bend Option (F056)  
 Figure 4.0



2000 units per bag

4 bags per box

NOTES:

- A. ALL DIMENSION ARE IN MILLIMETERS UNLESS OTHERWISE SPECIFIED
- B. DRAWING FILE NAME: PKG-DO41AREV1