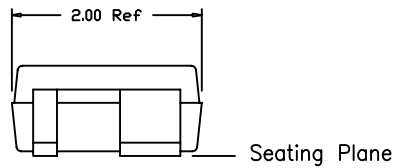
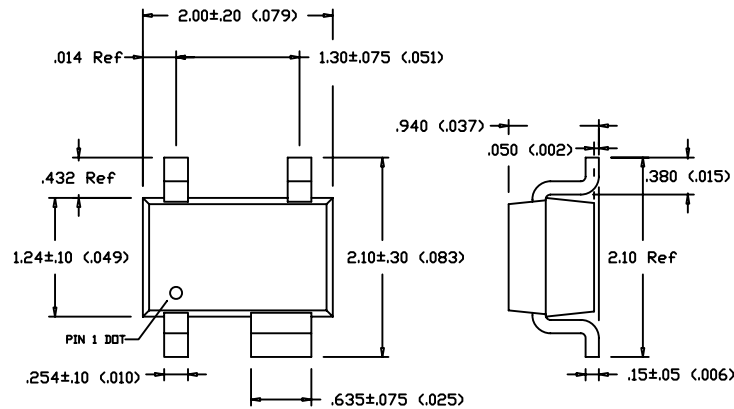


Caution: The Land Patterns and Solder Mask shown are generic for this package. Refer to product data sheet for any required variations specific to an application.



Scale (mm) 1:2

Notes:

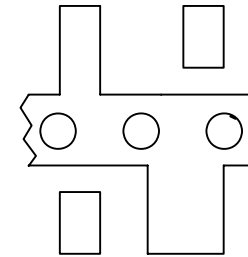
- Lead Base Metal - Copper \square lin 194
- Lead Finish
 - Std PN - Sn/Pb Sn \Rightarrow 80%
 - Z Option - 100% Matte Sn - .010 (.0004) min thk

UNLESS OTHERWISE SPECIFIED,
DIMENSIONS ARE IN mm (Inches)
PER ANSI Y14.5M-1982.
TOLERANCES ARE:
DECIMAL ANGLE
.XX \pm .12 (.005) \pm 1/2°
.XXX \pm .05 (.002)

MATERIAL(S):
See Notes

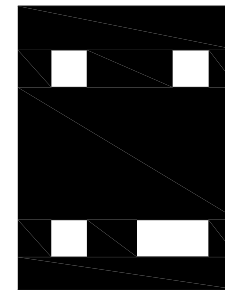
FINISH:
See Notes

- Do Not Scale Hard Copy -



Scale (mm) 1:2

- Generic Land Pattern -



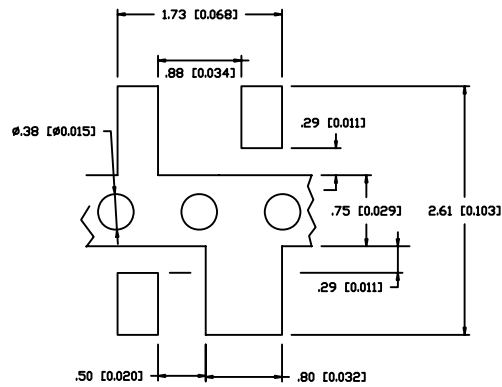
Scale (mm) 1:2

- Generic Solder Mask Opening -



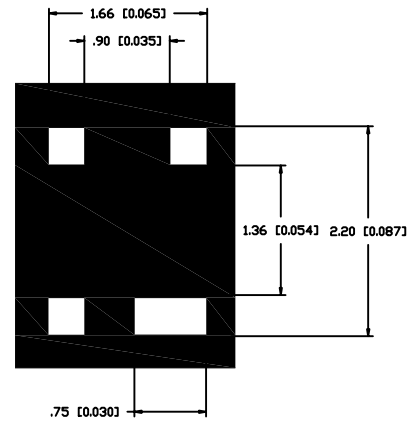
Package Type:
SOT-343 (SC70-4) Pins 2 & 4 Fused
SMDI Package Type: XXX-XX43

Dwg No.	MPO-100139	Sht 1 of 2	REV C
---------	------------	---------------	----------



Scale (mm) 1:2

- Generic Land Pattern -



Scale (mm) 1:2

- Generic Solder Mask Opening -

- Do Not Scale Hard Copy -

www.BDTIC.com/RFMD

Package Type: SOT-343 (SC70-4) Pins 2 & 4 Fused SMDI Package Type: XXX-XX43		
Dwg No.	MPO-100139	Sht 2 of 2
		REV C