

REVISION			
REV	DESCRIPTION	DCN	DATE
1	UPDATE LAYOUT		11-12-08
			BY/APPO KAK/JS

NOTES UNLESS OTHERWISE SPECIFIED:

- FABRICATE 1AW IPC-6012, CLASS 2, CURRENT REVISION.
- BOARD SHALL MEET THE INSPECTION CRITERIA OF IPC-A-600 CLASS 2, CURRENT REVISION.
- USE ARTWORK 455841AW, CURRENT REV.

4 MATERIAL: GETEK.

5 FINISHED WEIGHT PER SQUARE FOOT NOMINAL:
OUTER LAYERS SHALL BE 1 OZ.

6. DESWEAR HOLES AND VIAS.

7 FINISH: ENIG.

8. SILKSCREEN COMPONENT SIDE ONLY WITH NONCONDUCTIVE EPOXY INK. COLOR SHALL BE A CONTRASTING INK WITH RESPECT TO SOLDERMASK COLOR. DISTORTION OF SILKSCREEN IS ACCEPTABLE OVER TRACES. REMOVE EPOXY INK FROM SOLDER LANDS.

9. APPLY SOLDERMASK OVER BARE COPPER (SBOBC) 1AW IPC-SM-840, TOP SIDE ONLY, USING LPI, COLOR CLEAR OR GREEN. SOLDERMASK OVER VIAS IS NOT ACCEPTABLE.

10 SUPPLIER LOGO AND LOT NUMBER/DATE CODE SHALL ONLY BE SILKSCREENED WITH NON-CONDUCTIVE EPOXY INK IN APPROX. LOCATION SHOWN.

11 MARK ARTWORK NO. 455841AW, CURRENT REV LEVEL APPROX. WHERE SHOWN.

12 SCORING PROCESS TO FOLLOW DETAIL "A" (SEE SHEET 2). CIRCUIT FABRICATOR TO BREAK ONE SUB PANEL FROM EACH LOT TO ENSURE PROPER SCORING ACHIEVED.

13 A MAXIMUM OF ONE (1) "X"-OUT ARE ALLOWED PER SUB-PANEL.

14. NO SOLDERMASK FAR SIDE

LAYER 1 - COMP SIDE
LAYER 2 - GND PLANE
LAYER 3 - GND PLANE
LAYER 4 - BOTTOM SIDE

4 LAYER
CROSS SECTION
FILM SET

5

4 LAYER
CROSS SECTION
DIMENSIONAL TOLERANCE

PREPREG .014 ±.002

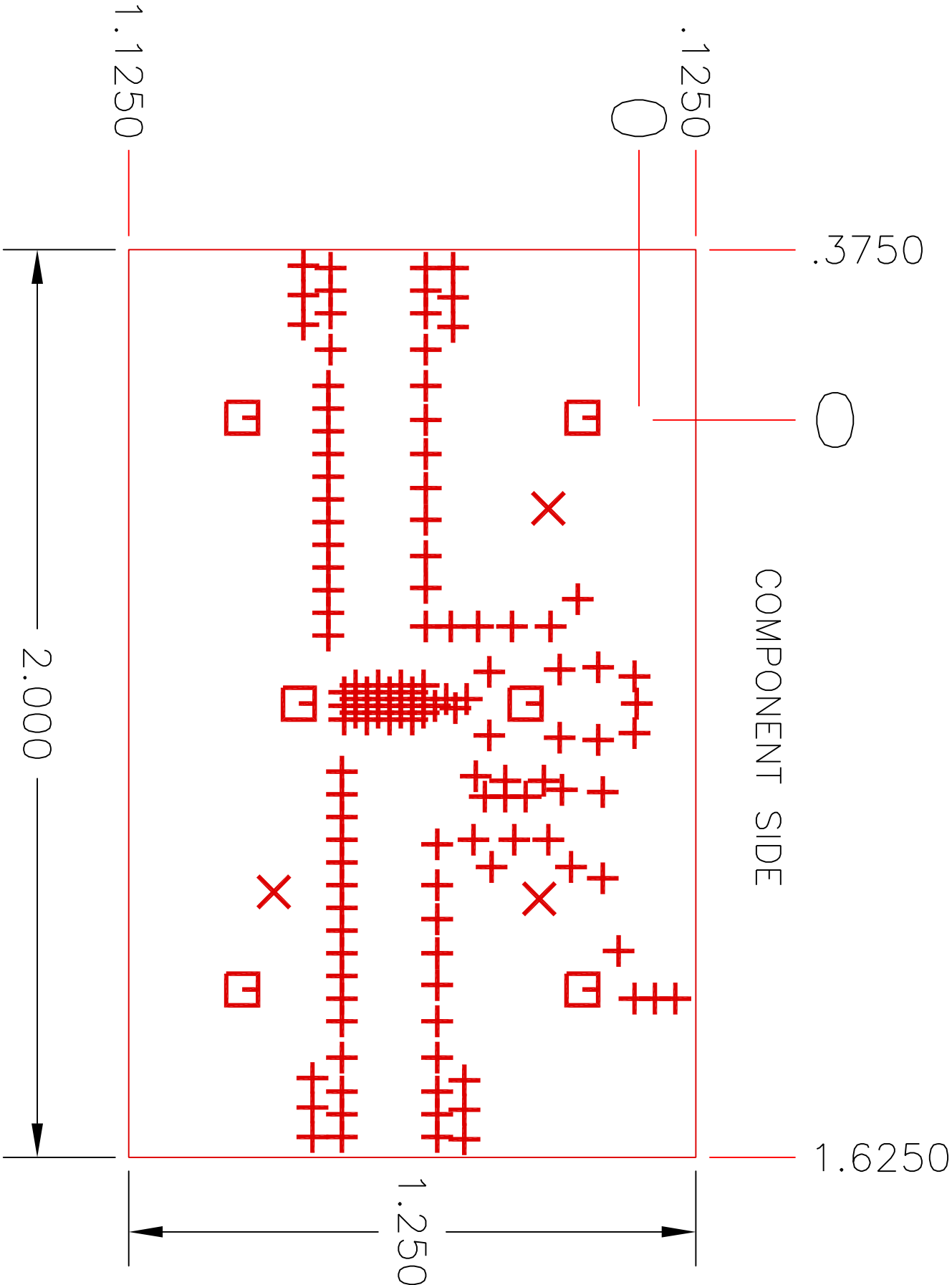
CORE

PREPREG .014

.062 ±.006

HOLE SCHEDULE (ALL PLATED THRU DIAMETERS ARE AFTER PLATING)				
SYM	DESCRIPTION	PLATED THRU	QTY	
+	Ø.013 +.003/--.010 THRU	YES	126	
X	Ø.055 ±.003 THRU	YES	3	
□	Ø.102 ±.003 THRU	YES	6	

COMPONENT SIDE



TriQuint SEMICONDUCTOR PROPRIETARY INFORMATION

QTY PER DASH NO		ITEM NO	PART OR IDENT NO	CAGE CODE	NOVENCATUURE OR DESCRIPTION	SPEC./STD
PARTS LIST OR MATERIAL						
UNLESS OTHERWISE SPECIFIED, DIMENSIONS ARE IN INCHES.						
BY DGC & D2 XXX REC & .005			TOLERANCES ON DIMENSIONS VIA & 2" Ø ANGLES ± 0° 30'		MATERIAL:	
MATERIAL:			DR K. KELSEN	9-4-08		
			CHK ENG J. SHARMA	9-4-08		
FINAL PROTECTIVE FINISH:			DR			
			TR			
			CONT NO.			

PRINTED CIRCUIT BOARD
AH322

SIZE CAGE CODE D 14482 455841PC REV 1

SCALE NONE W/O NO. SHEET 1 OF 2