

REVISION			
REV	DESCRIPTION	ECO	DATE
1	Move C12, Add C19		12-10-07
		BY/APPO	KK/AS

NOTES UNLESS OTHERWISE SPECIFIED:

1. FABRICATE IAW IPC-6012, CLASS 2, CURRENT REVISION.
2. BOARD SHALL MEET THE INSPECTION CRITERIA OF IPC-A-600 CLASS 2, CURRENT REVISION.
3. USE ARTWORK 455136AW CURRENT REV.

4 MATERIAL: ULTRALAM 2000. SEE LAYER STACK-UP BELOW.

5 FINISHED WEIGHT OF ALL COPPER LAYERS SHALL BE 1 OZ. PER SQUARE FOOT NOMINAL.

6. DESMEAR HOLES AND VIAS.

7 FINISH: GOLD FINISH: GOLD PLATE IAW MIL-G-45204C, TYPE I, GRADE C, Class I, 50 micro inches +/- 1.3 micro inches, KNOOP Hardness of 130-200, OVER 200 micro inches +/- 5 micro inches NICKEL/QQ-N-290A, Class I, Grade G.

8. SILKSCREEN COMPONENT SIDE ONLY WITH NONCONDUCTIVE EPOXY INK. COLOR SHALL BE A CONTRASTING INK WITH RESPECT TO SOLDERMASK COLOR. DISTORTION OF SILKSCREEN IS ACCEPTABLE OVER TRACES. REMOVE EPOXY INK FROM SOLDER LANDS.

9. APPLY SOLDERMASK OVER BARE COPPER (SMOBC) IAW IPC-SM-840, TOP SIDE ONLY, USING LPI, COLOR GREEN. SOLDERMASK OVER VIAS IS NOT ACCEPTABLE.

10. TANGENCY IS ACCEPTABLE.

11. REMOVAL OF NON-FUNCTIONAL PADS ON INTERNAL LAYERS IS ACCEPTABLE.

12 SUPPLIER LOGO AND LOT NUMBER/DATE CODE SHALL ONLY BE SILKSCREENED WITH NON-CONDUCTIVE EPOXY INK IN APPROX. LOCATION SHOWN.

13 MARK ARTWORK 455136AW, CURRENT REV LEVEL APPROX. WHERE SHOWN.

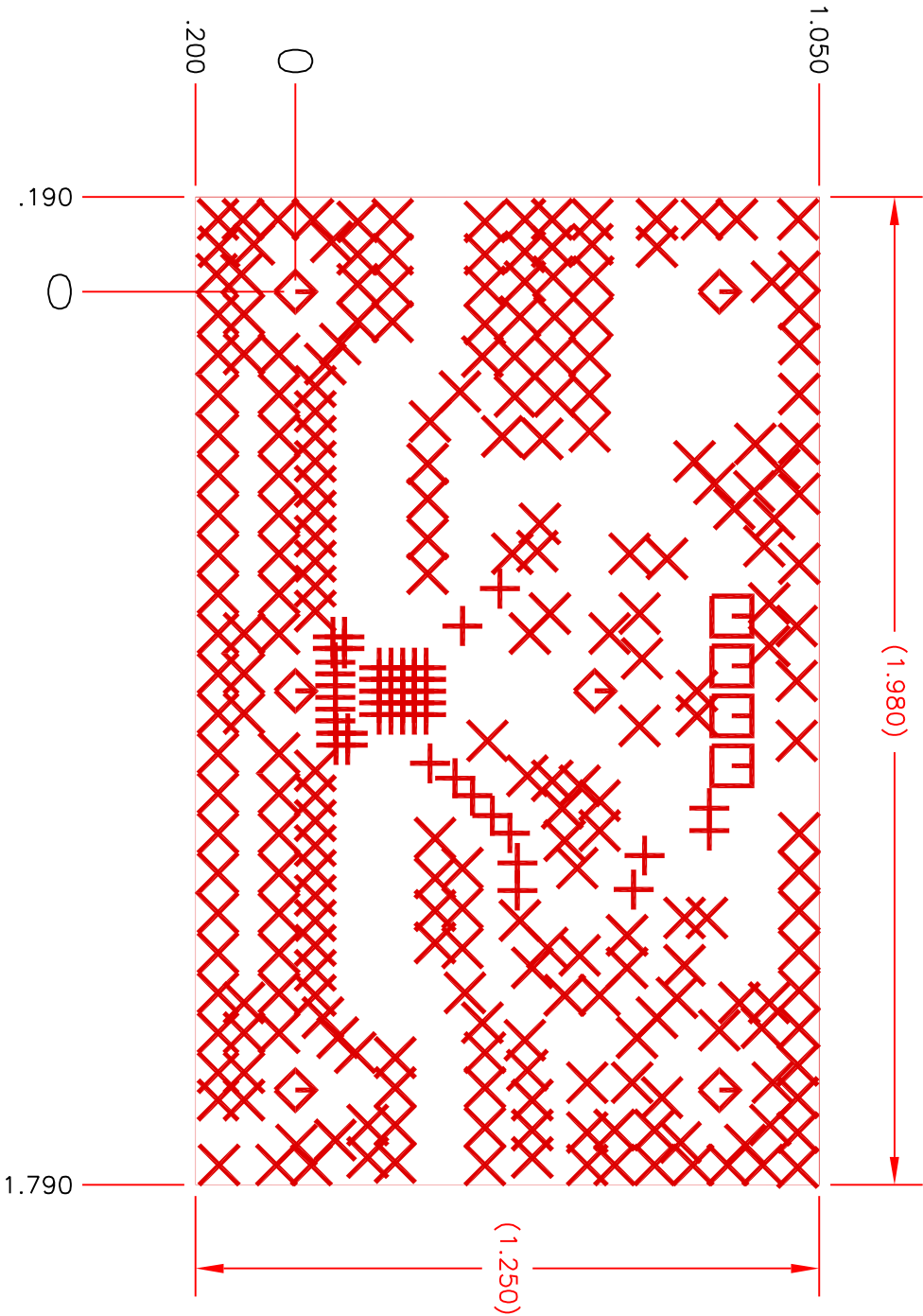
14 SCORING PROCESS TO FOLLOW DETAIL "A" ( SEE SHEET 2). CIRCUIT FABRICATOR TO BREAK ONE SUB-PANEL FROM EACH LOT TO ENSURE PROPER SCORING ACHIEVED.

15 A MAXIMUM OF TWO (2) X-OUT ARE ALLOWED PER SUB-PANEL.

16. FABRICATION SHALL NOT ADD COPPER THEIVING ON ANY LAYER.

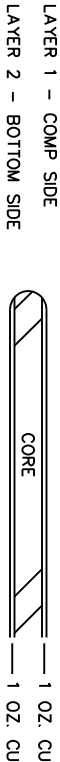
17 USE DRILL SIZE Ø.0135.

COMPONENT SIDE



2 LAYER  
CROSS SECTION  
FILM SET

5



2 LAYER  
CROSS SECTION  
DIMENSIONAL TOLERANCE



HOLE SCHEDULE (ALL PLATED THRU DIAMETERS ARE AFTER PLATING)			
SYM	DESCRIPTION	PLATED THRU	QTY
+	Ø.010 +.003/- .010 THRU	YES	52
X	Ø.020 ±.003 THRU	YES	241
□	Ø.042 ±.003 THRU	YES	4
◇	Ø.102 ±.003 THRU	YES	6

17

		ITEM NO	PART OR IDENT NO	CAGE CODE	NOMENCLATURE OR DESCRIPTION		SPEC./STD							
QTY PER DASH NO														
PARTS LIST OR MATERIAL														
UNLESS OTHERWISE SPECIFIED, DIMENSIONS ARE IN INCHES.														
TOLERANCES ON DIMENSIONS														
FRACTIONS														
DECIMALS														
ANGLES ± 0° 30'														
MATERIAL:														
BY DEC ± .005														
XXX DEC ± .005														
K. Kelsen										12-4-06				
CHK										12-4-06				
ENG E. Camargo														
INFO														
DR														
TR														
CONT NO.														
SCALE NONE W/O NO.														
SHEET 1 OF 2														

COMMUNICATIONS, INC.

PRINTED CIRCUIT BOARD,  
AH314/AH315

SIZE	CAGE CODE	455136PC	REV
D	14482		1

A

B

C

D

455136PC