



A

B

C

D

11. THESE ARE CRITICAL IMPEDANCE TRACES.  
FINISHED DIMENSION AND TOLERANCES TO BE AS LISTED BELOW:

A: .025"  $\pm$ 0.001  
B: .020"  $\pm$ 0.001  
C: .005"  $\pm$ 0.0005

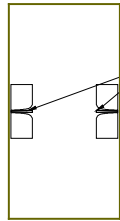
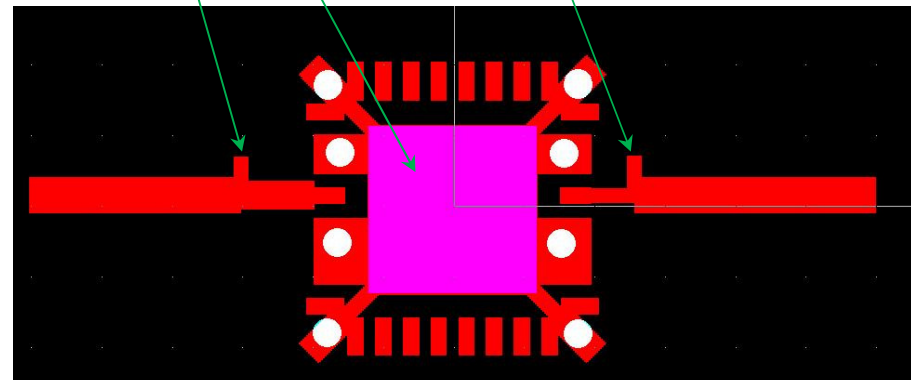
12. THERE SHALL BE A SOLID METAL SLUG EMBEDDED IN THE PCB IN THE REGION SHOWN IN MAGENTA. THIS IS KNOWN AS 'EMBEDDED COPPER COIN' CONSTRUCTION. AS IMPLEMENTATION DETAILS ARE SPECIFIC TO THE PCB VENDOR, THEY ARE NOT INCLUDED IN THIS DRAWING.

### LAND PATTERN DETAIL

SEE NOTE 13 AND 14  
ON PAGES 11 AND 12

SEE NOTE 12

SEE NOTE 13 AND 14  
ON PAGES 11 AND 12



SEE NOTE 11

DIM 'C'  
SEE NOTE 11

DIM 'B'  
SEE NOTE 11

DIM 'C'  
SEE NOTE 11

DIM 'A'  
SEE NOTE 11

A

B

C

D

**TriQuint**  
SEMICONDUCTOR

500 W RENNER RD  
RICHARDSON TX 75080  
TEL 972.994.8200  
www.triquint.com

TITLE

PCB, RAW, TGA4906-SM EVB

SIZE  
**B**

CAGE CODE  
**1CVM1**

DWG NO

REV

--

SCALE

CADFILE

SHEET 2 OF 13

A

B

C

D

## BOARD STACKUP

0.030-.060 Inches  
Finished Thickness  
(Non Critical)Material: Rogers 3203  
Thickness: 10 mils Core CRITICAL IMPEDANCE LAYERTopside Metal - See Gerber File 'METAL\_1\_TOP'  
0.5 Oz Cu with Au Immersion Wash PlatingInside Metal - See Gerber File 'METAL\_2'  
0.5 Oz CuMaterial: FR4  
Thickness: NonCritical  
PrepegInside Metal - See Gerber File 'METAL\_3'  
0.5 Oz CuBottom Metal - See Gerber File 'METAL\_4\_BOT'  
0.5 Oz Cu with Au Immersion Wash PlatingMaterial: FR4  
Thickness: Non-Critical  
Core**TriQuint**  
SEMICONDUCTOR500 W RENNER RD  
RICHARDSON TX 75080  
TEL 972.994.8200  
www.triquint.com

TITLE

PCB, RAW, TGA4906-SM EVB

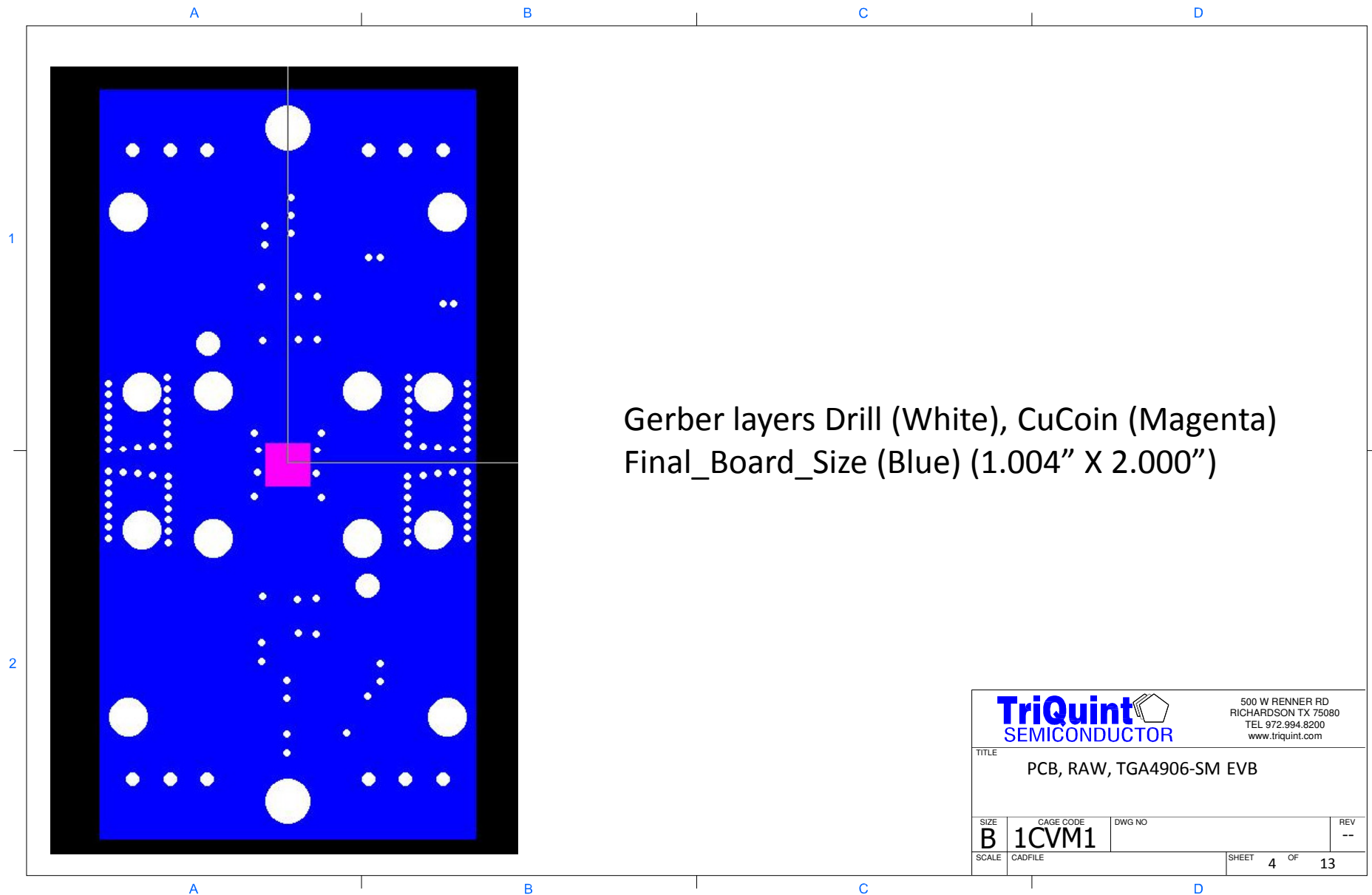
SIZE	CAGE CODE	DWG NO	REV
B	1CVM1		--
SCALE	CADFILE	SHEET 3 OF 13	

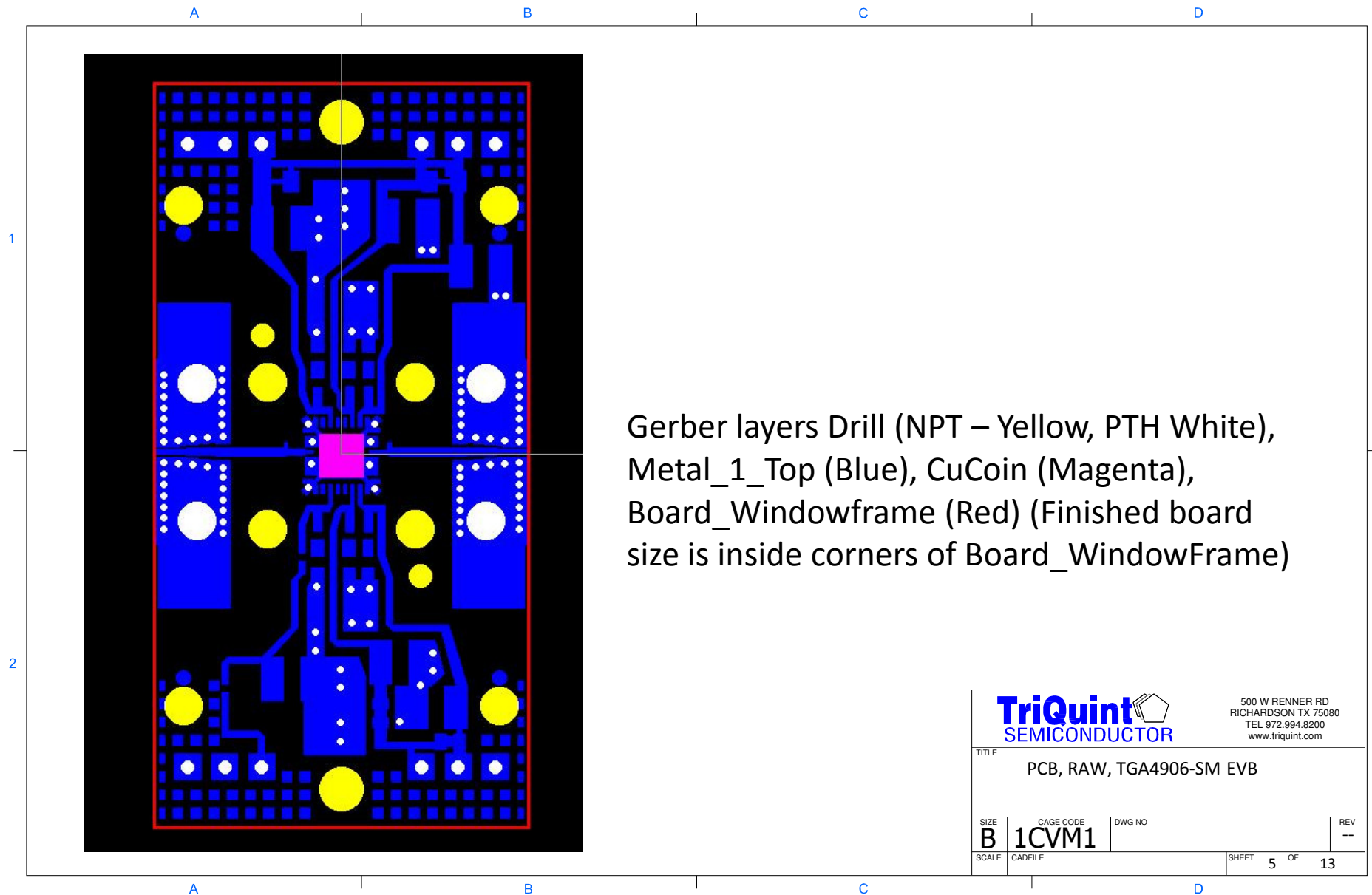
A

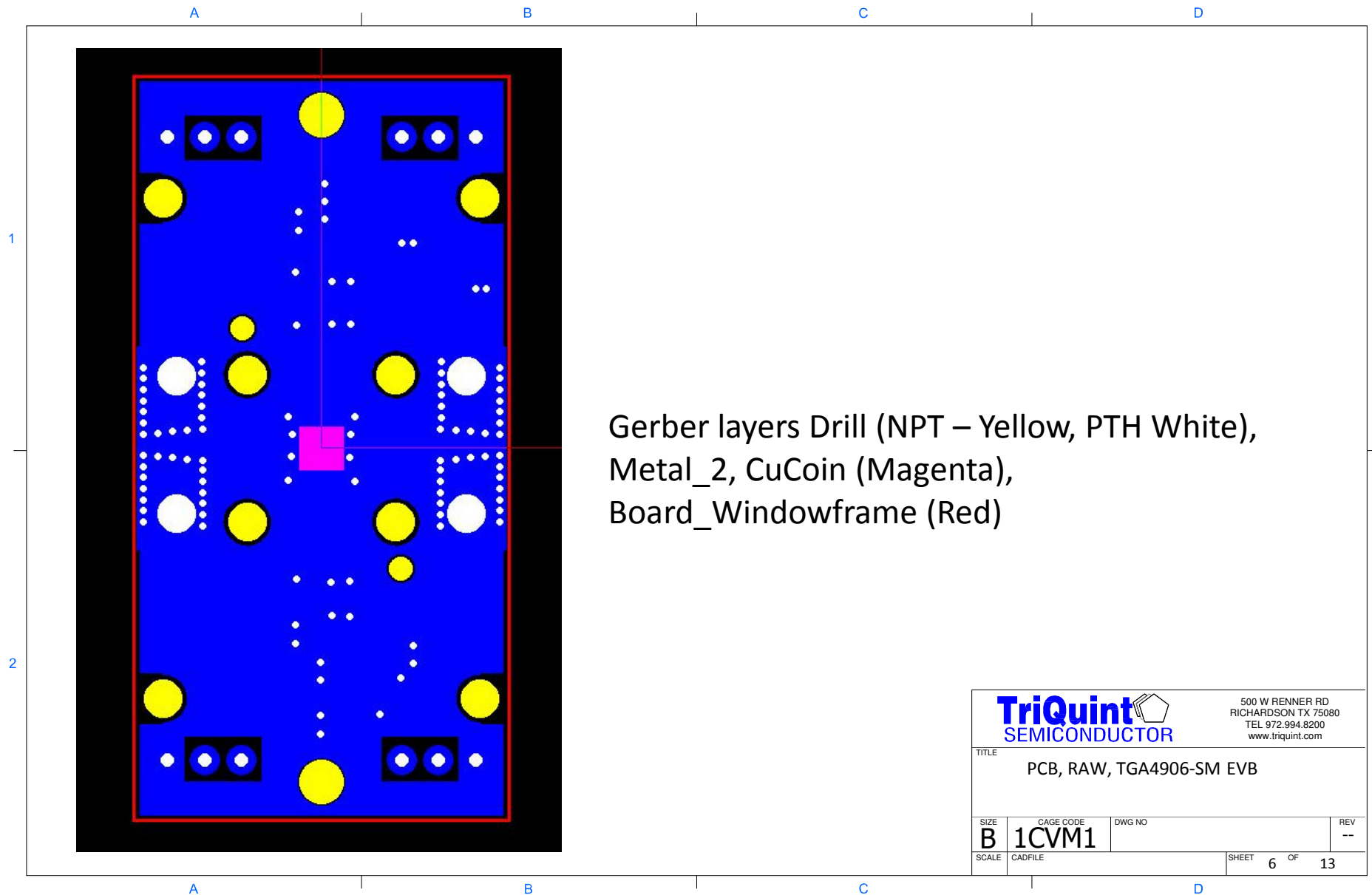
B

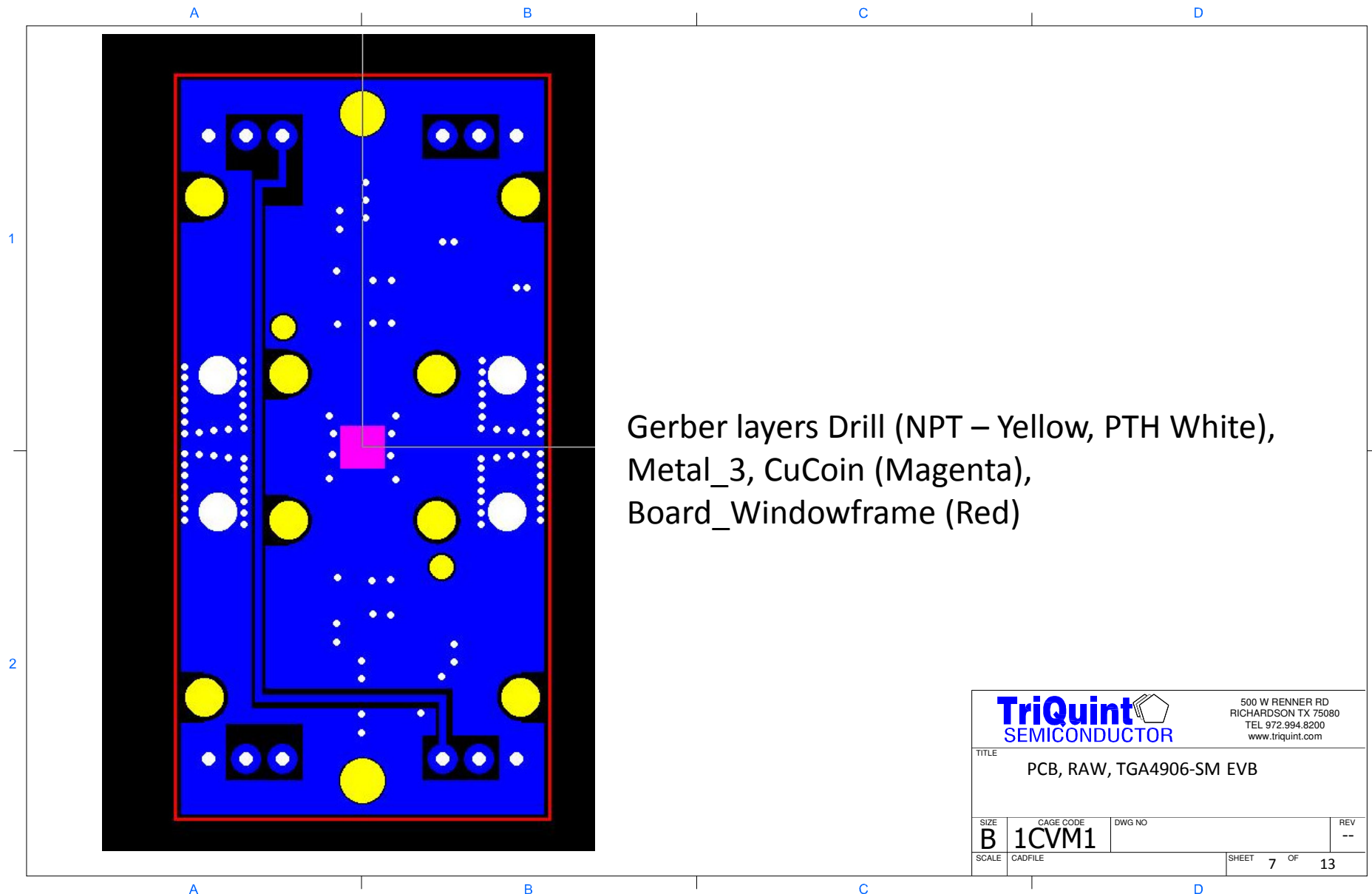
C

D





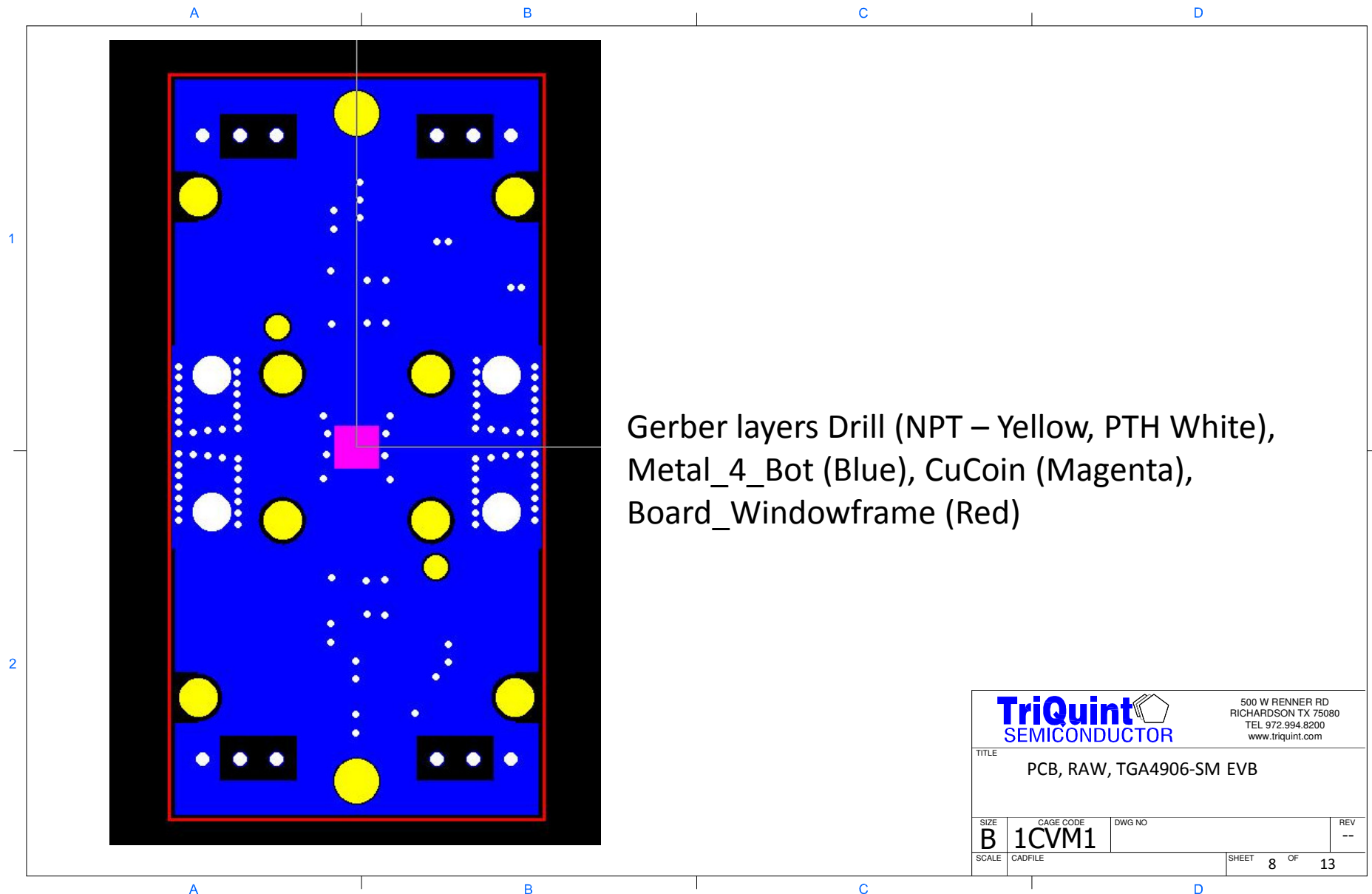


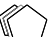


**TriQuint**  
SEMICONDUCTOR

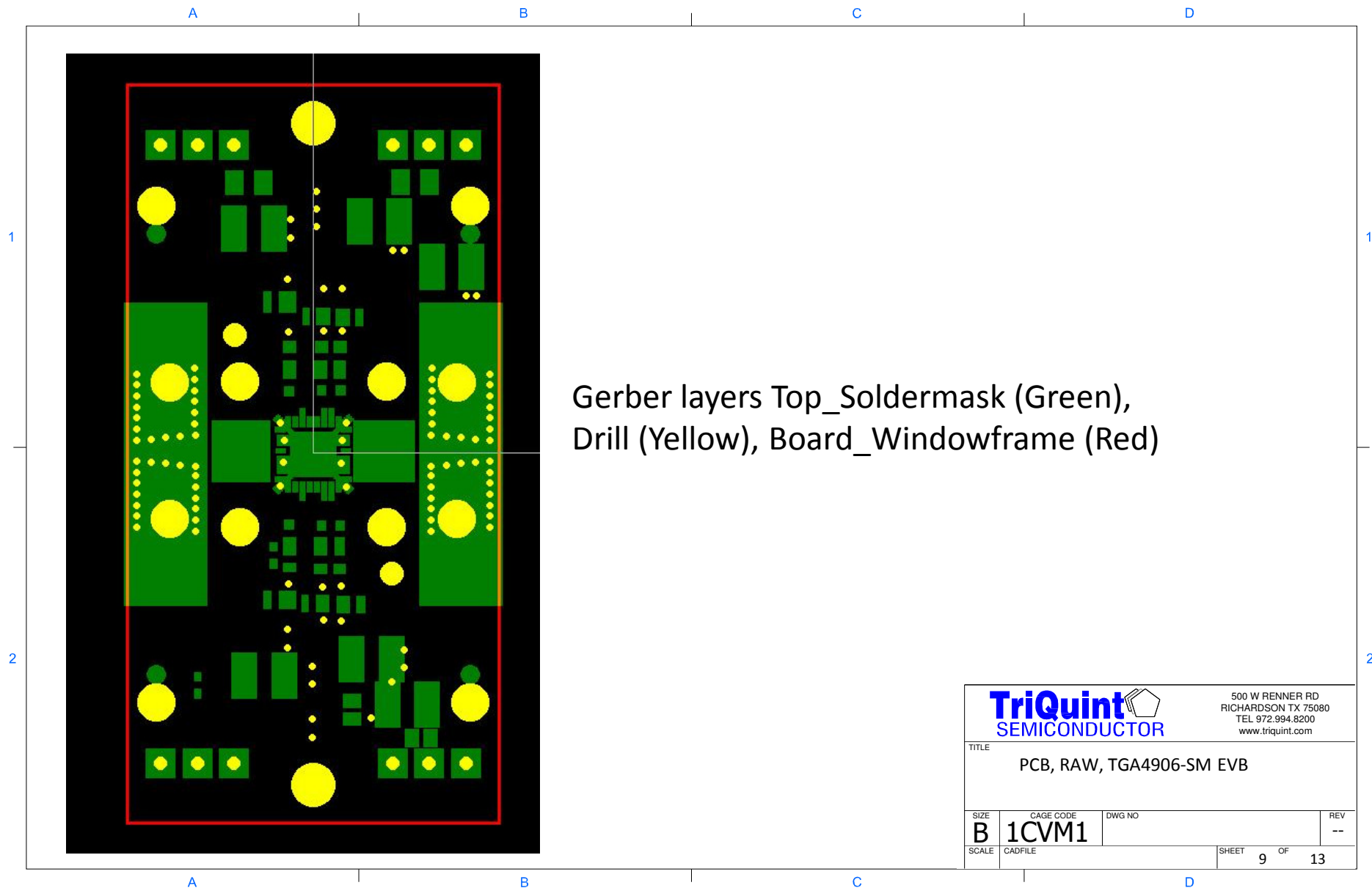
500 W RENNER RD  
RICHARDSON TX 75080  
TEL 972.994.8200  
www.triquint.com

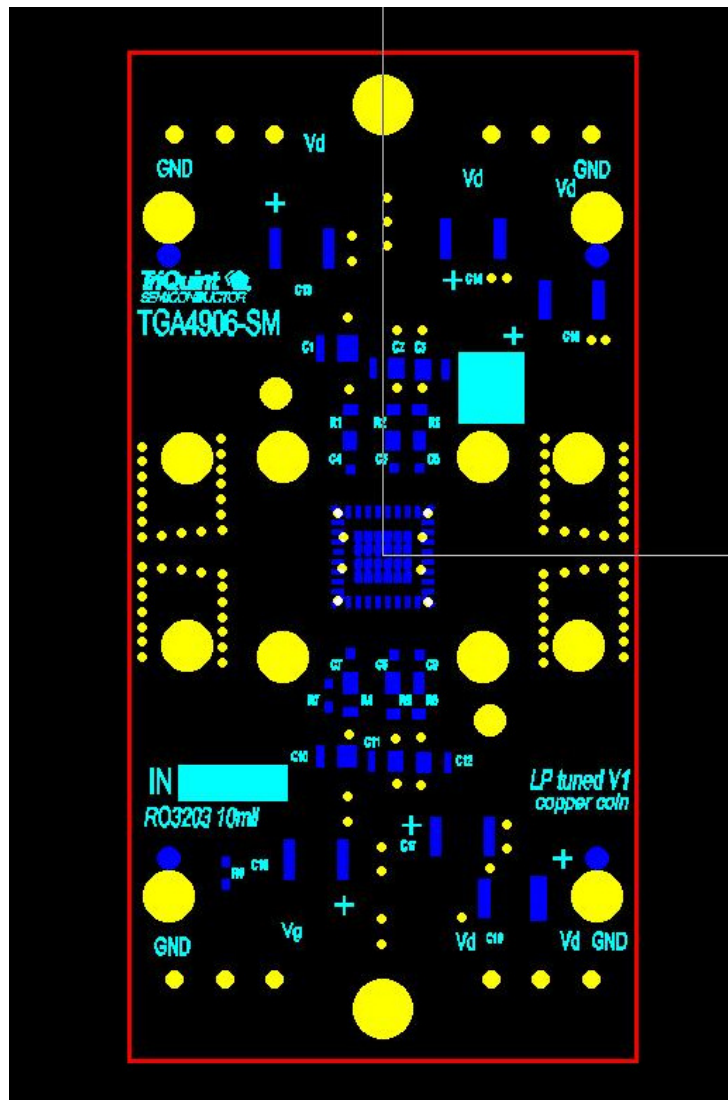
TITLE			
PCB, RAW, TGA4906-SM EVB			
SIZE	CAGE CODE	DWG NO	REV
B	1CVM1		--
SCALE	CADFILE	SHEET 7 OF 13	




<b>TriQuint</b> SEMICONDUCTOR				500 W RENNER RD RICHARDSON TX 75080 TEL 972.994.8200 www.triquint.com	
TITLE					
PCB, RAW, TGA4906-SM EVB					
SIZE <b>B</b>	CAGE CODE <b>1CVM1</b>	DWG NO		REV --	
SCALE	CADFILE	SHEET		8	OF 13

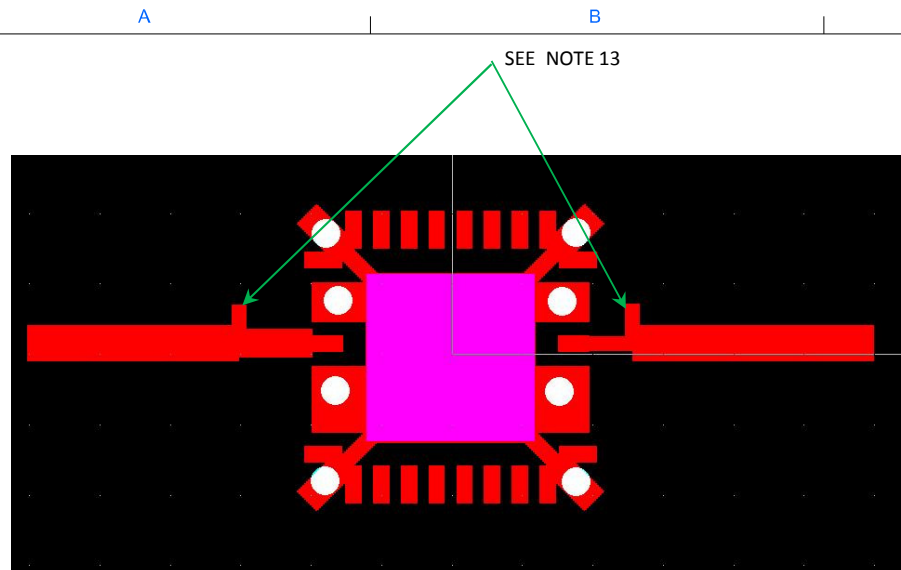






Stencil (Blue), Top\_Silkscreen (Cyan),  
Drill (Yellow), Board\_Windowframe (Red)

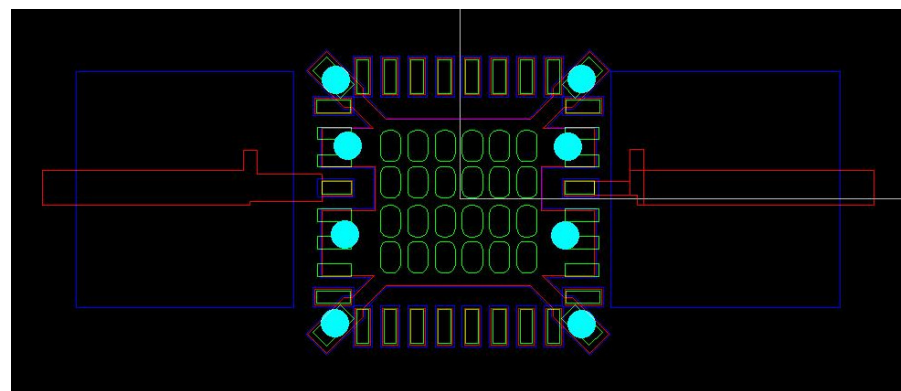
		500 W RENNER RD RICHARDSON TX 75080 TEL 972.994.8200 www.triquint.com	
TITLE PCB, RAW, TGA4906-SM EVB			
SIZE <b>B</b>	CAGE CODE <b>1CVM1</b>	DWG NO	REV --
SCALE	CADFILE	SHEET 10 OF	13




## Land Pattern Details

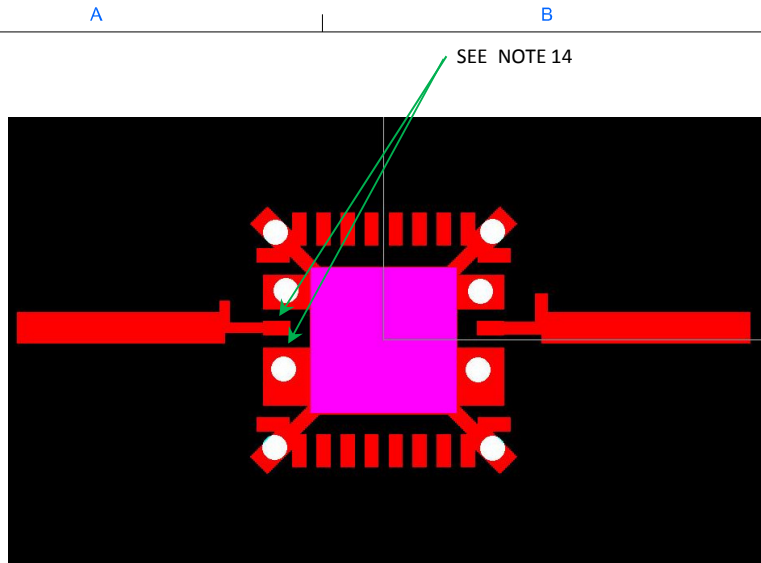
Gerber layers:  
Metal\_1\_Top\_Baseline(Red),  
CuCoin (Magenta),  
Drill (PTH (White))

13. ALL PERFORMANCE DATA IN THE DATASHEET USED  
THE Metal\_1\_Top\_Baseline INPUT AND OUTPUT  
NETWORKS.



Gerber layers:  
Metal\_1\_Top\_Baseline(Red),  
Top\_Soldermask (Blue),  
Stencil (Green),  
Drill (PTH (Cyan))

		500 W RENNER RD RICHARDSON TX 75080 TEL 972.994.8200 www.triquint.com	
TITLE PCB, RAW, TGA4906-SM EVB			
SIZE <b>B</b>	CAGE CODE <b>1CVM1</b>	DWG NO	REV -
SCALE	CADFILE	SHEET <b>11</b>	OF <b>13</b>

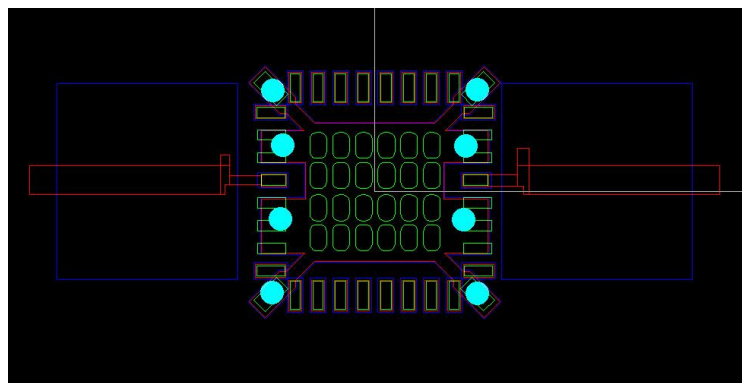


## Land Pattern Details - Alternative

Gerber layers:


Metal\_1\_Top\_Alt\_Input(Red),  
CuCoin (Magenta),  
Drill (PTH (White))

14. Metal\_1\_Top\_Alt\_Input SHOULD BE ELECTRICALLY EQUIVALENT TO THE METAL\_1\_TOP\_BASELINE. AS OF 2/2012, THIS HAS NOT BEEN VERIFIED WITH SIMULATIONS BUT NOT WITH HARDWARE. USING THIS ALTERNATE LAYOUT IS VERY LOW RISK. WHEN COMPARED TO 'METAL\_1\_TOP\_BASELINE', THE INCREASED CLEARANCE IN THE AREA INDICATED MAY PROVIDE IMPROVED MANUFACTURABILITY.




Gerber layers:

Metal\_1\_Top\_Alt\_Input(Red),  
Top\_Soldermask (Blue),  
Stencil (Green),  
Drill (PTH (Cyan))

		500 W RENNER RD RICHARDSON TX 75080 TEL 972.994.8200 www.triquint.com	
TITLE PCB, RAW, TGA4906-SM EVB			
SIZE <b>B</b>	CAGE CODE <b>1CVM1</b>	DWG NO	REV --
SCALE	CADFILE	SHEET 12 OF	13

# RECORD OF REVISIONS

REV	ECN	Date	DESCRIPTION
NE		2/2012	Initial release to web

		500 W RENNER RD RICHARDSON TX 75080 TEL 972.994.8200 www.triquint.com	
TITLE PCB, RAW, TGA4906-SM EVB			
SIZE <b>B</b>	CAGE CODE <b>1CVM1</b>	DWG NO	REV --
SCALE	CADFILE	SHEET 13	OF 13